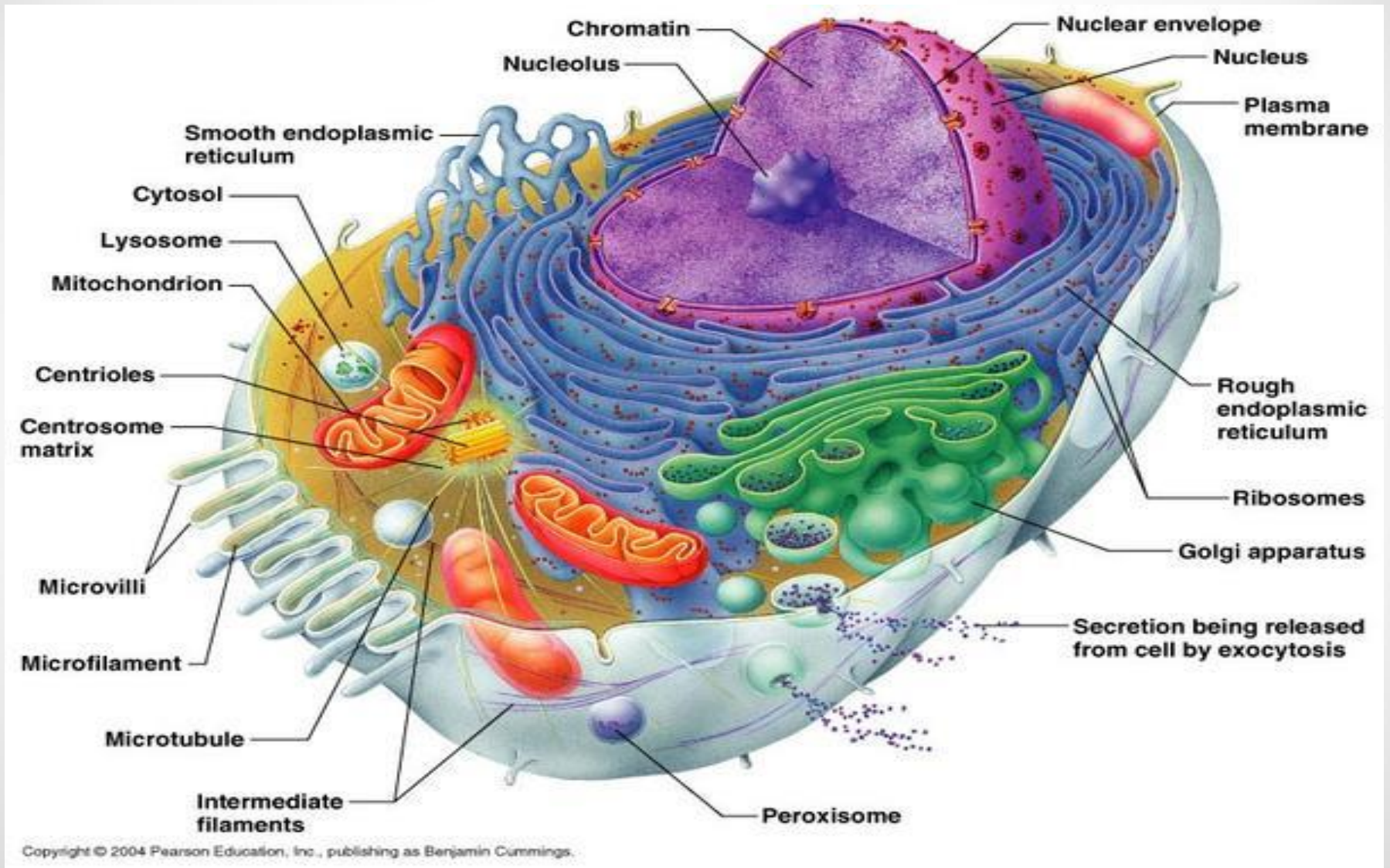


**RAKK**

Koostanud: Ülle Irdt

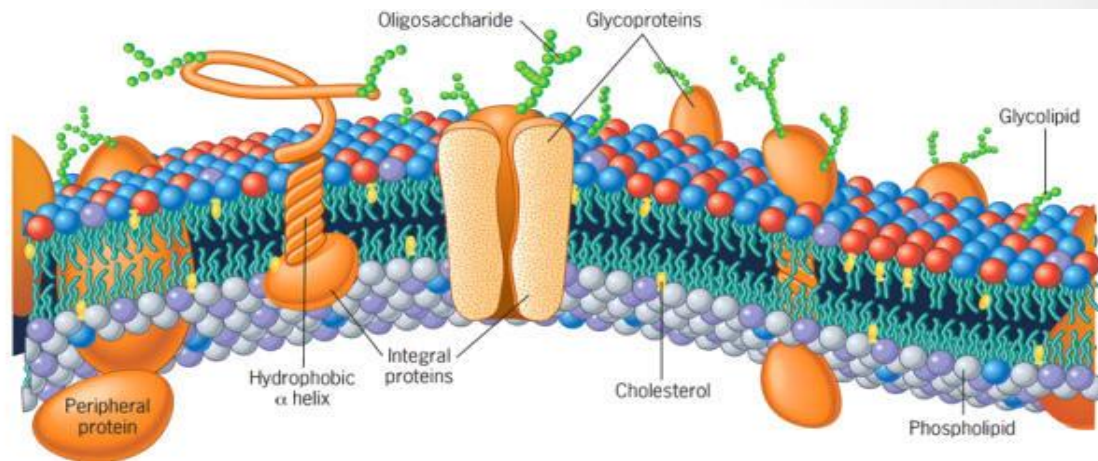
# Loomarakk



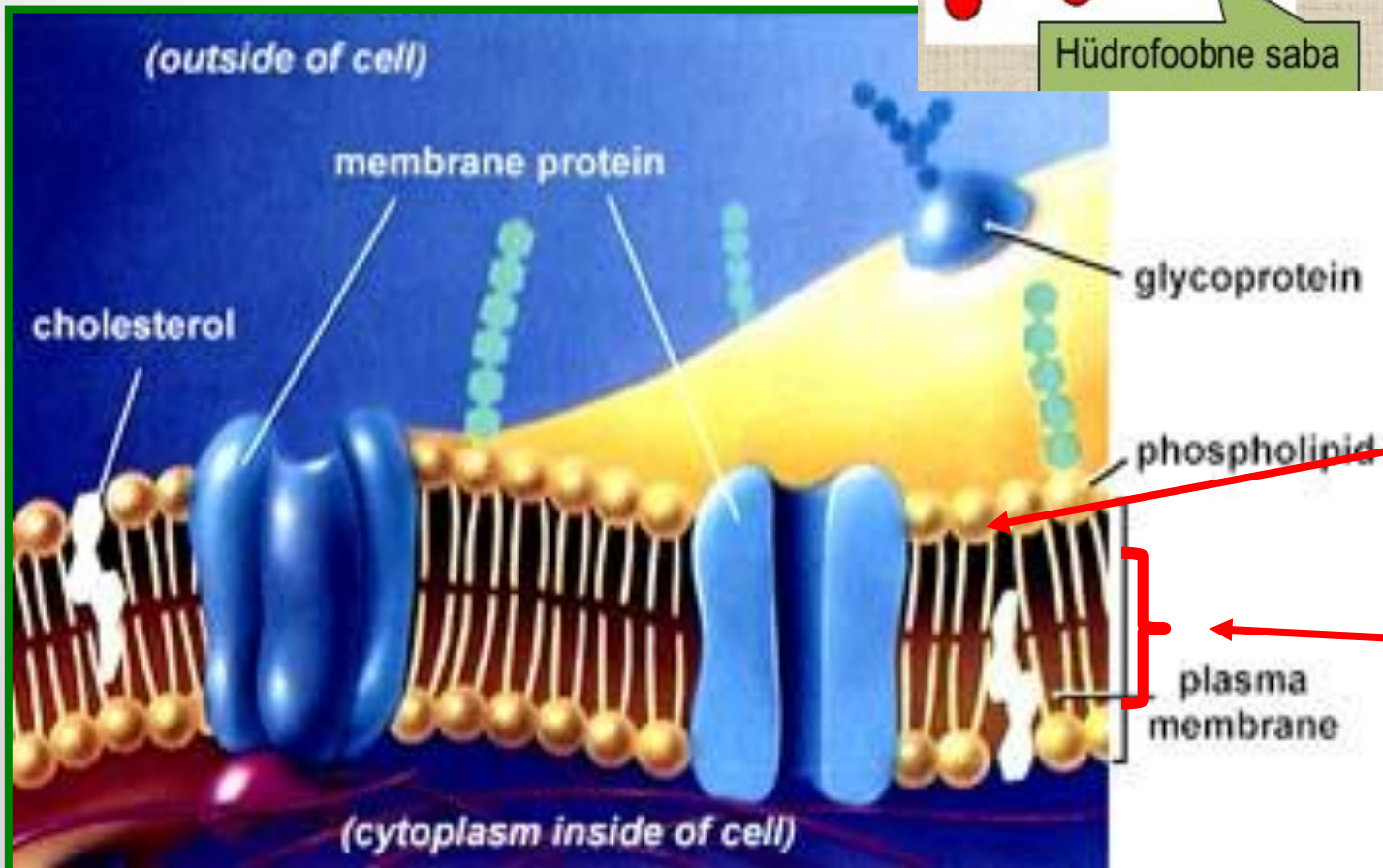
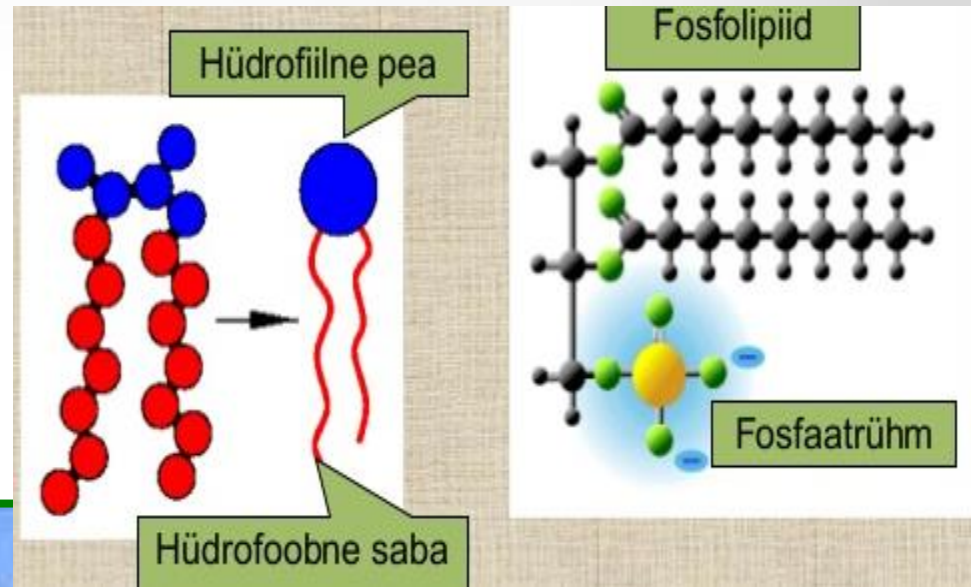
- <https://www.youtube.com/watch?v=URUJD5NEXC8&t=240s>

# Rakumembraan

- Rakke ümbritseb **rakumembraan**:
  - Taimerakul on lisaks **kest** (tselluloos)
  - Loomarakul: õhuke süsivesikute ja valkude kiht-**glükokalüks**
- Membraani ülesanded:
  - Aine-, energia- ja informatsiooni-vahetus
- Koosneb:
  - Fosfolipiidide kaksikkiht, valgud ja kolesteroolimolekulid (loomarakul)



# Raku- membraan



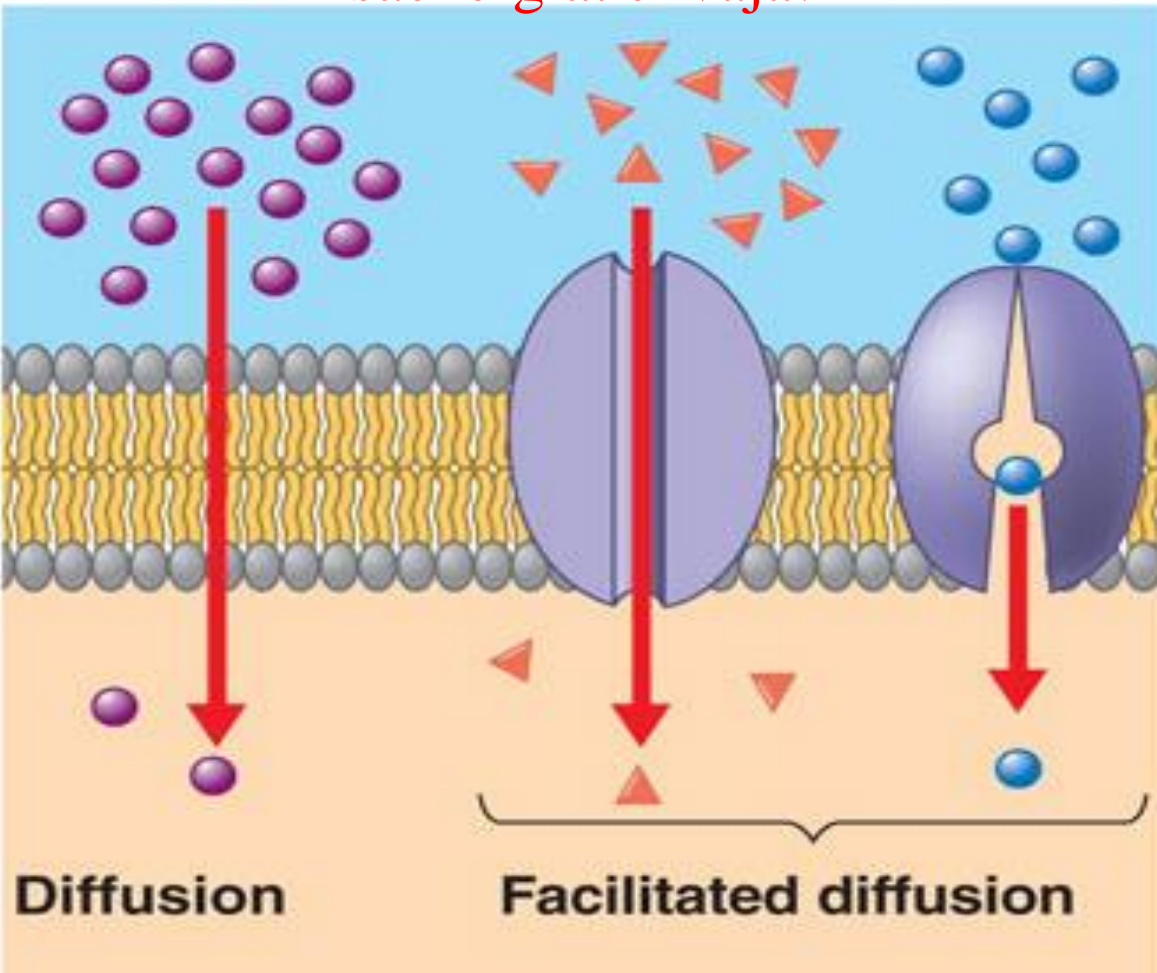
Hüdrofiilne

Hüdrofoobne

# Ainete transport

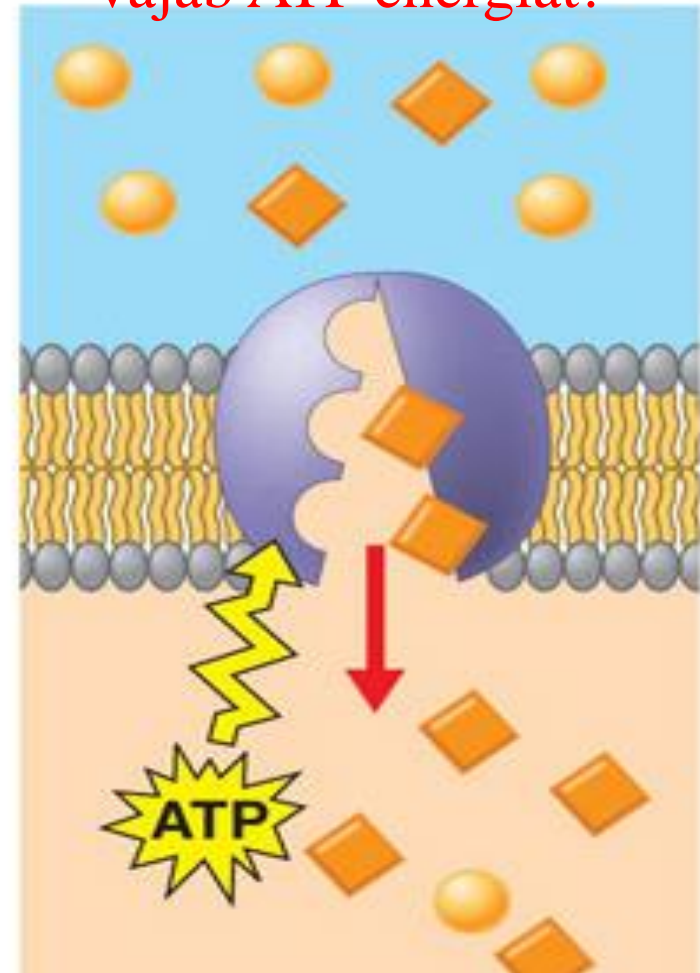
## Passiivne transport

Lisaenergiat ei vaja!



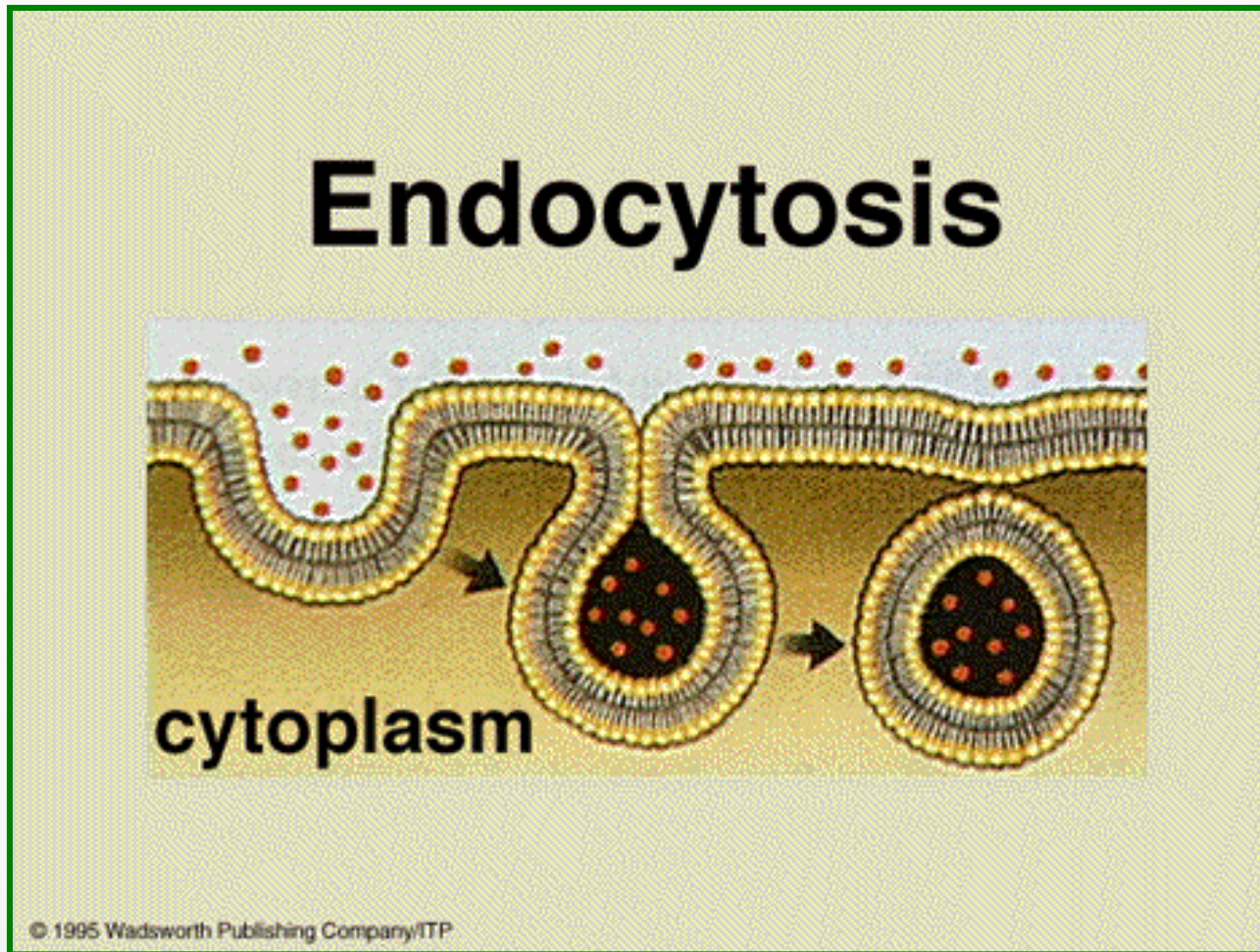
## Aktiivne transport

Vajab ATP energiat!

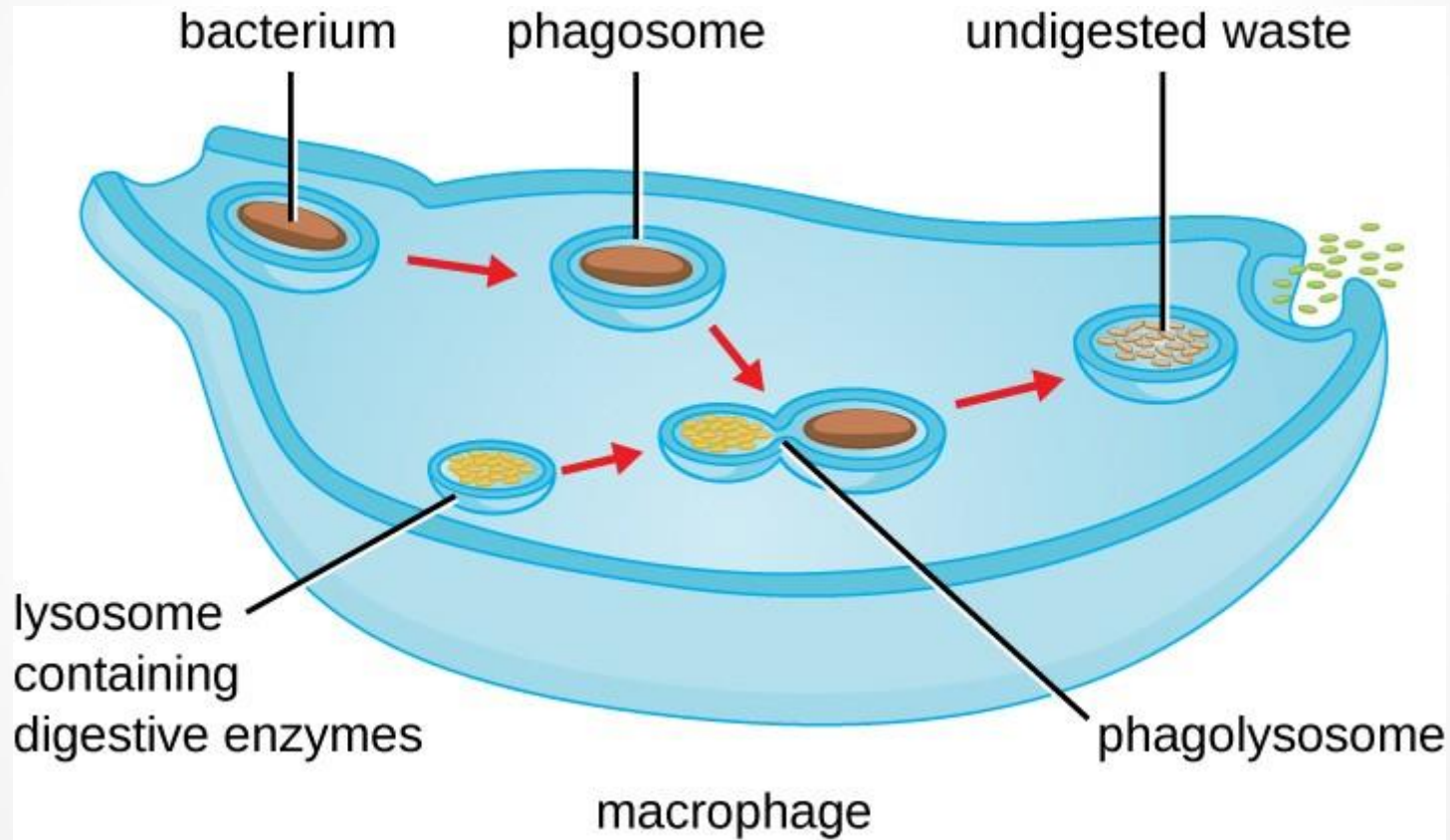


# Fagotsütoos:

1) Endotsütoos: aine omandamine



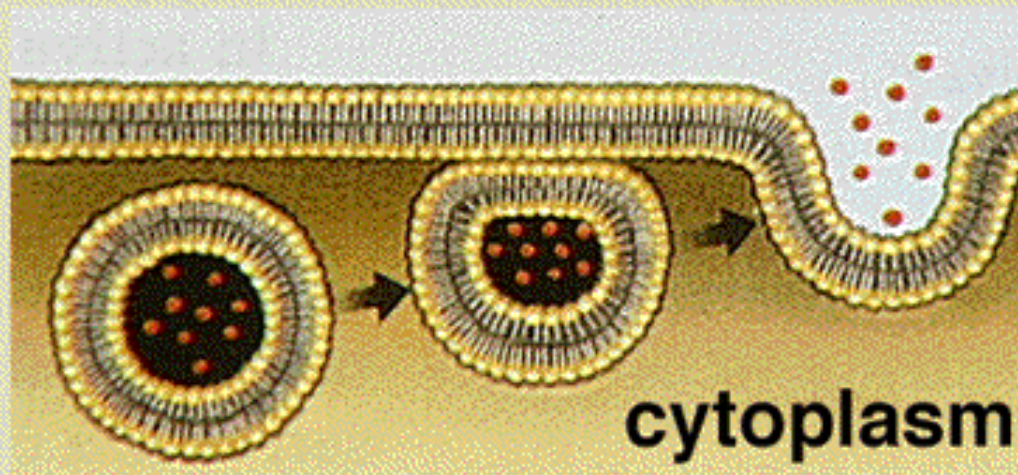
## 2) Sekundaarse lüsoosoomi moodustumine, ainete lagundamine



<https://courses.lumenlearning.com/microbiology/chapter/pathogen-recognition-and-phagocytosis/>

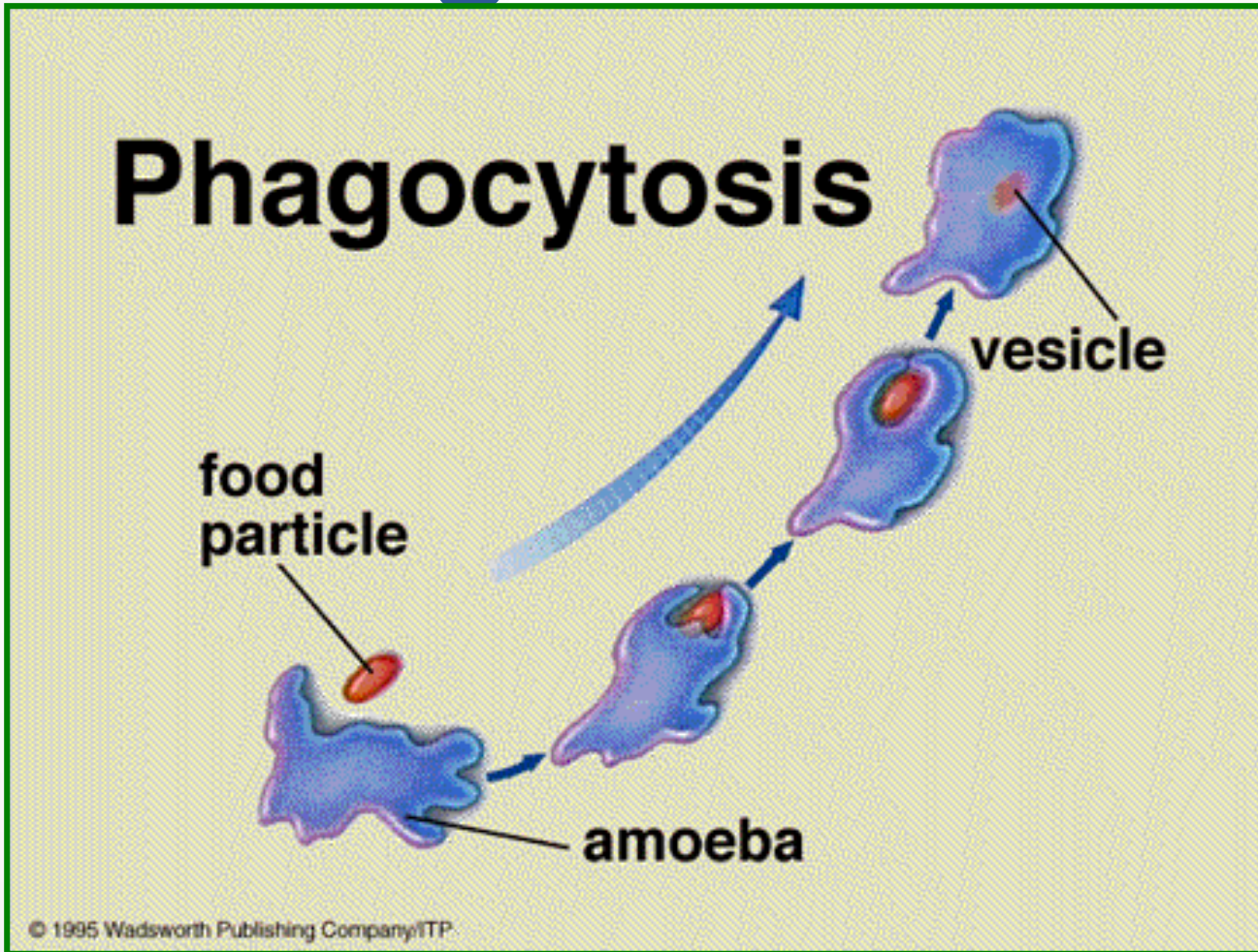
### 3) Eksotsütoos: ülejäägi väljaheitmine

## Exocytosis



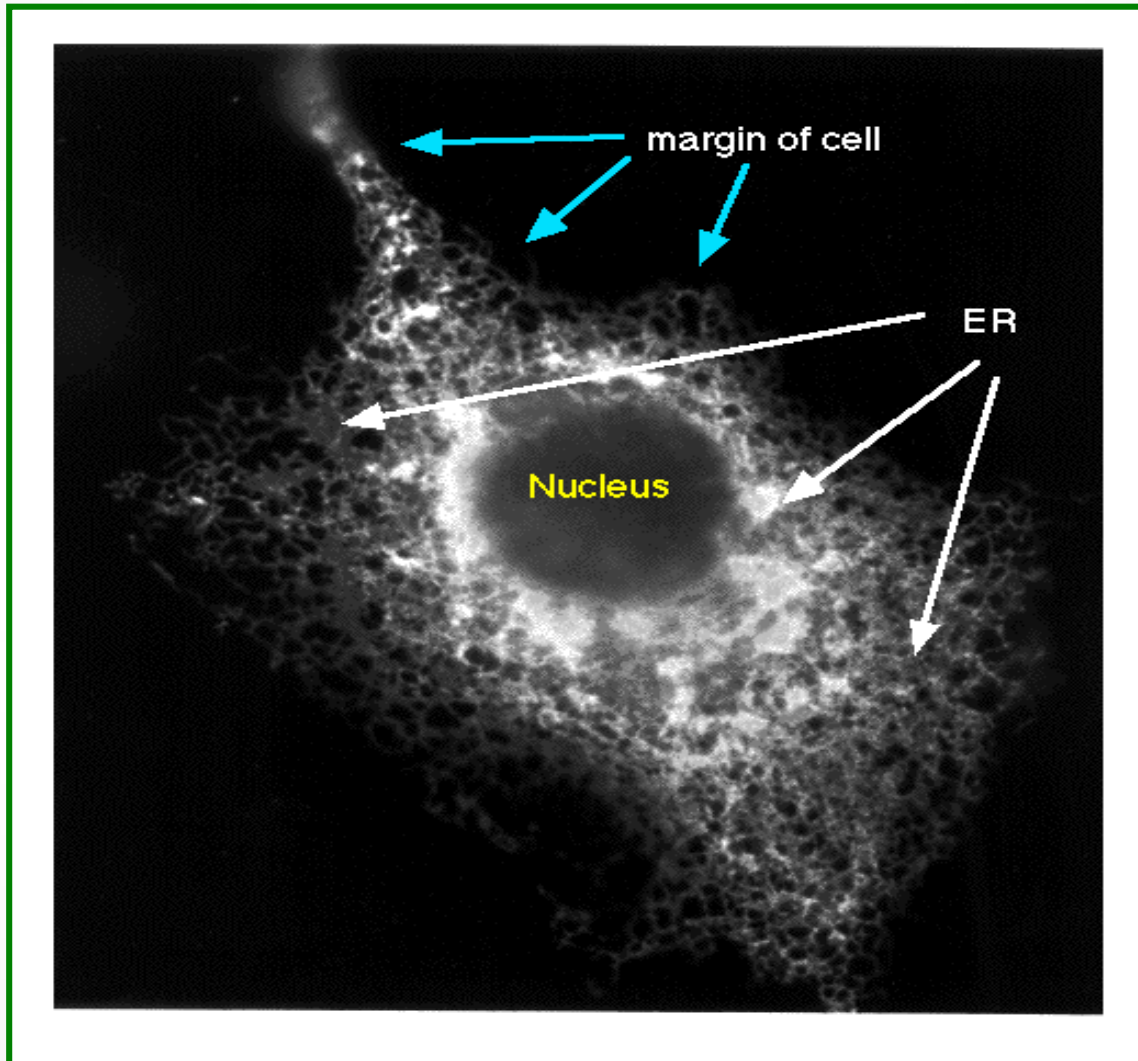


# Fagotsütoos



<http://www.youtube.com/watch?v=aWltglvTiLc&feature=related>

# Tsütoplasma vörgustik

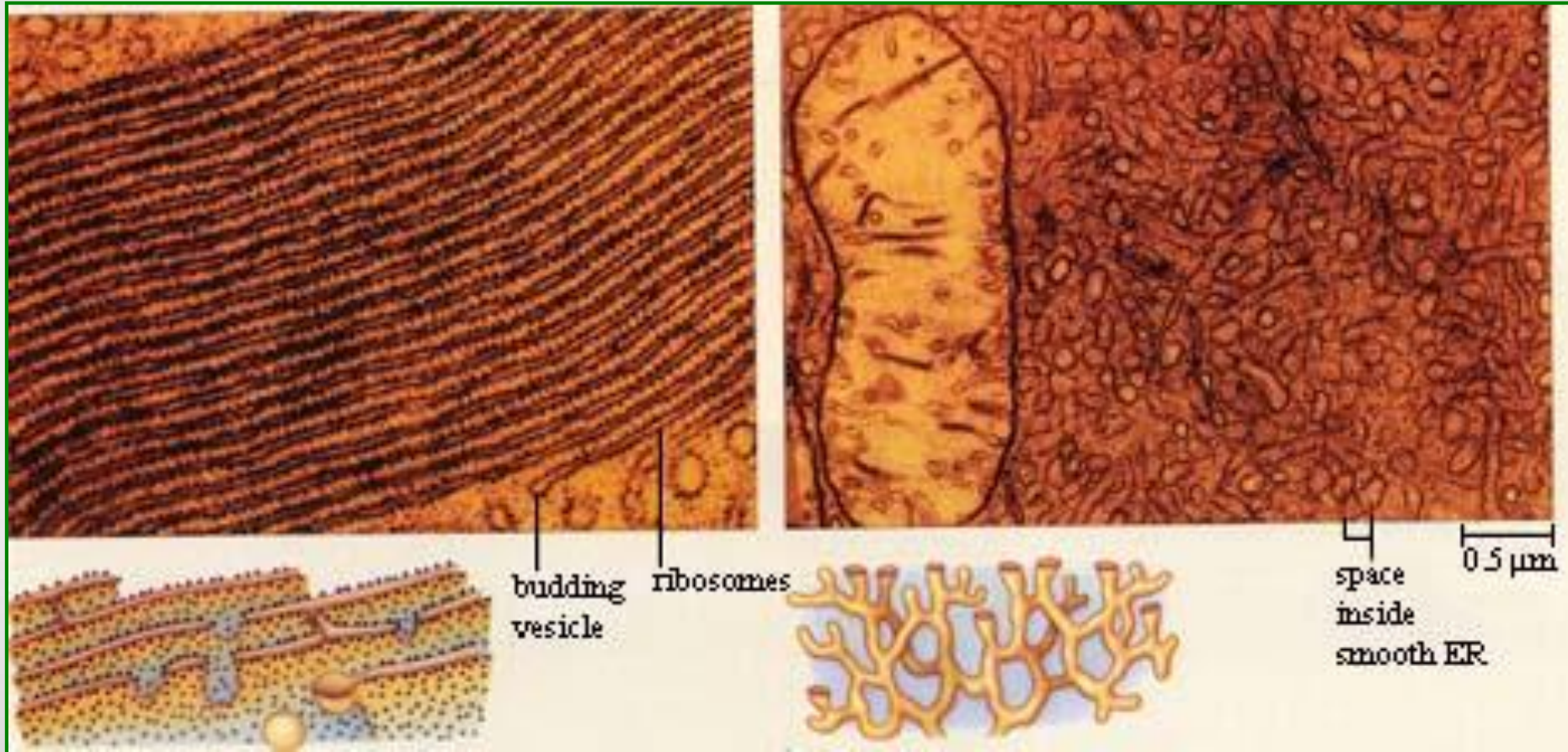


<https://www.youtube.com/watch?v=PASnAaulK-Y>

# Tsütoplasma võrgustik

**Karedapinnaline**

**Siledapinnaline**



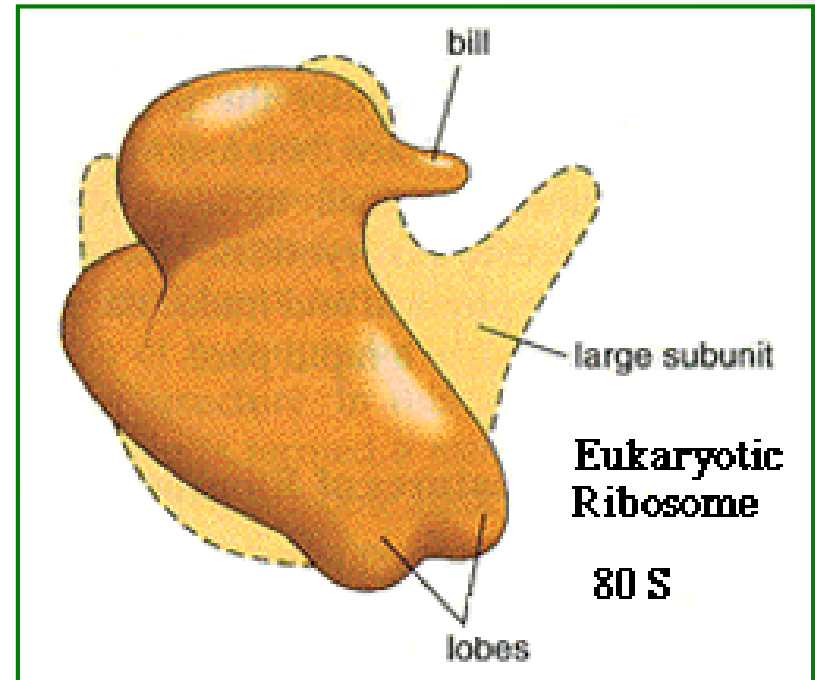
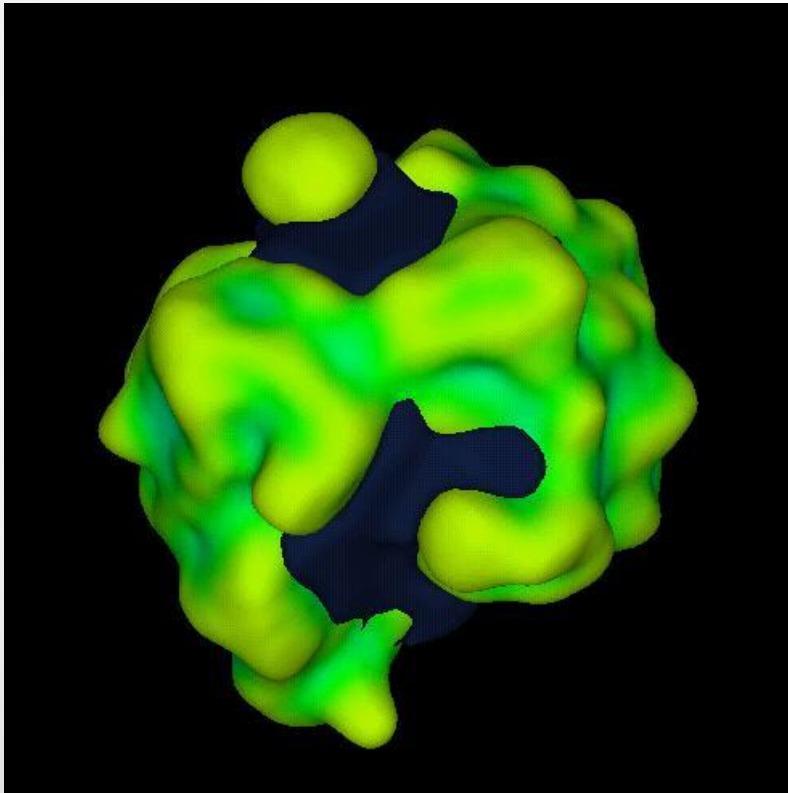
Valkude tootmine ja transport

Süsivesikute ja lipiidide  
tootmine ja transport

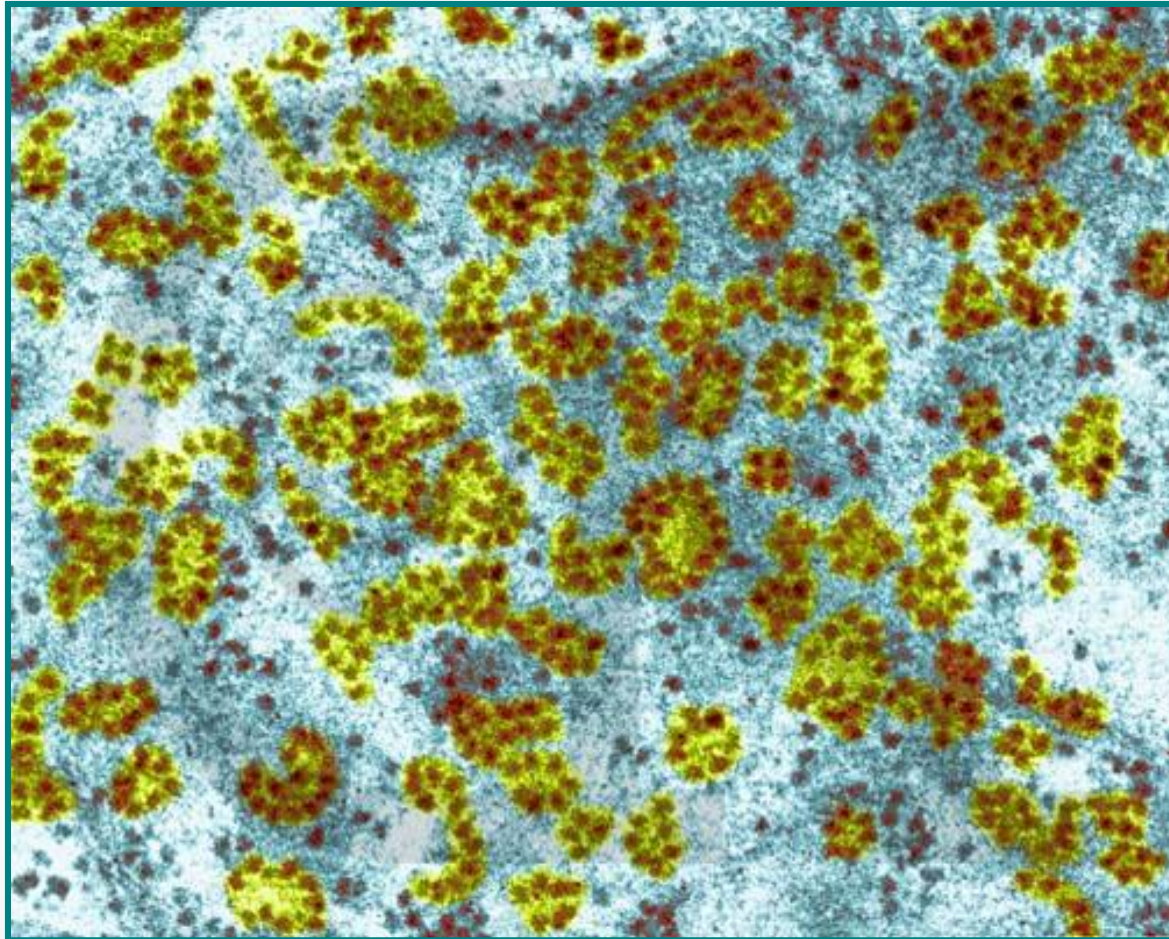
# Ribosoom

Koosneb: rRNA ja valgud

Ülesanne: valgu süntees

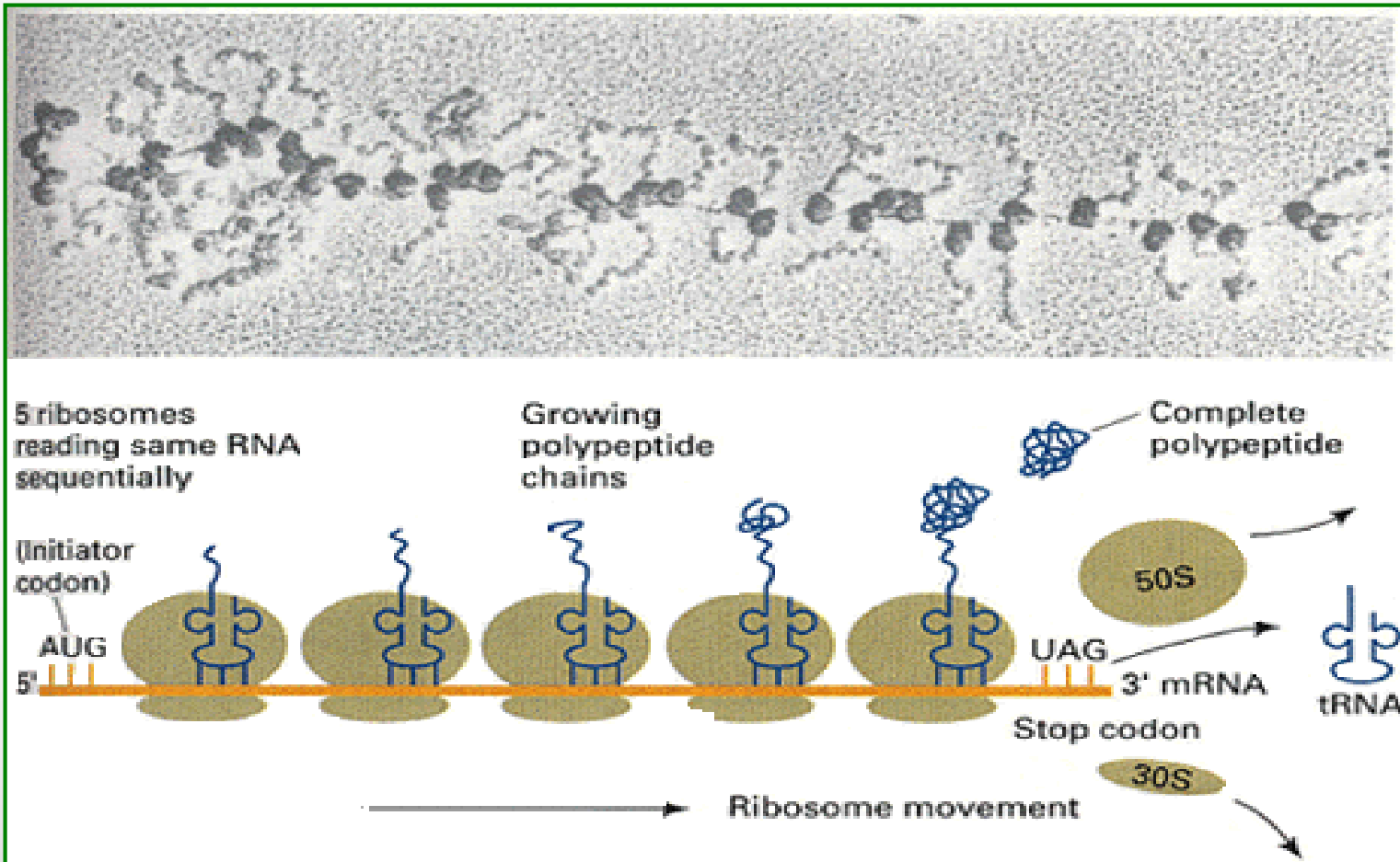


# Ribosoomid



# Polüsoom

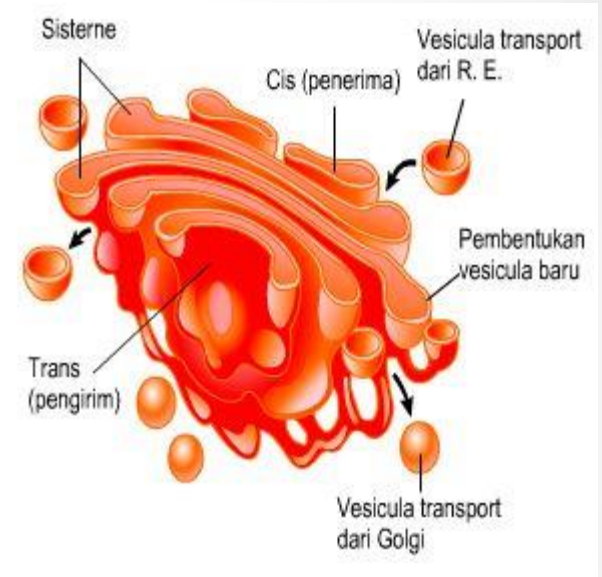
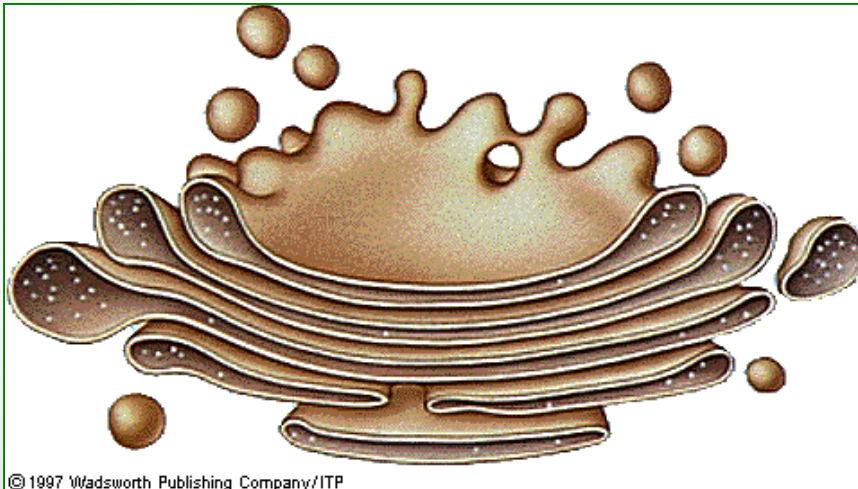
Ühte ja sama tüüpi valku tootvad ribosoomid=**Polüsoom**



# Golgi kompleks

Membraansete lamellide süsteem:

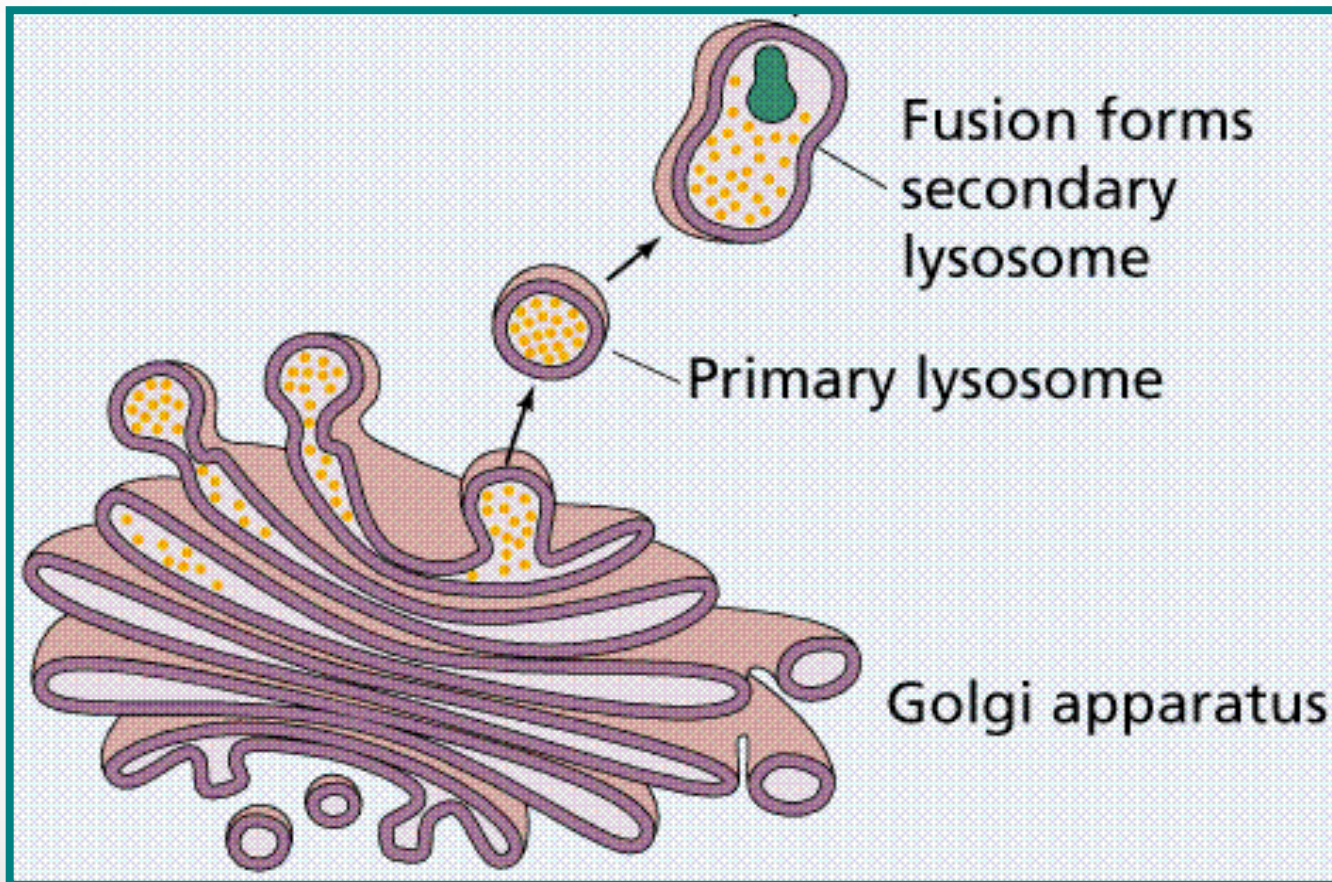
- 1) Ainete töötlemine ja sorteerimine,
- 2) Valkude lõplik töötlemine ja pakendamine,
- 3) Rakumembraani tootmine,
- 4) Lüsosoomide tootmine



# Lüsoosoomid

Ühekordse membraaniga

Ülesanne: lagundamine





# Mitokonder

2x membraan: sisemine

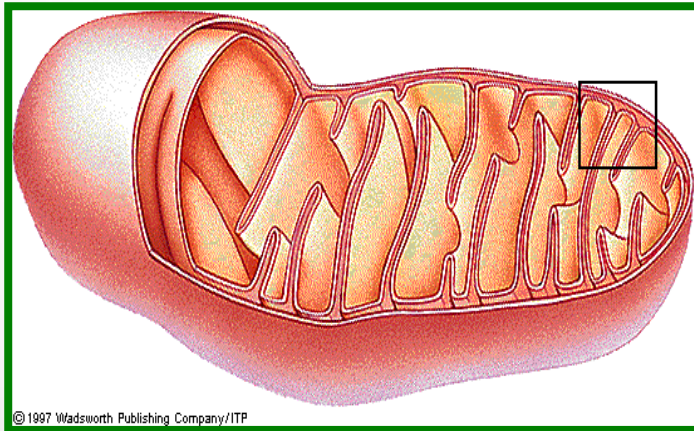
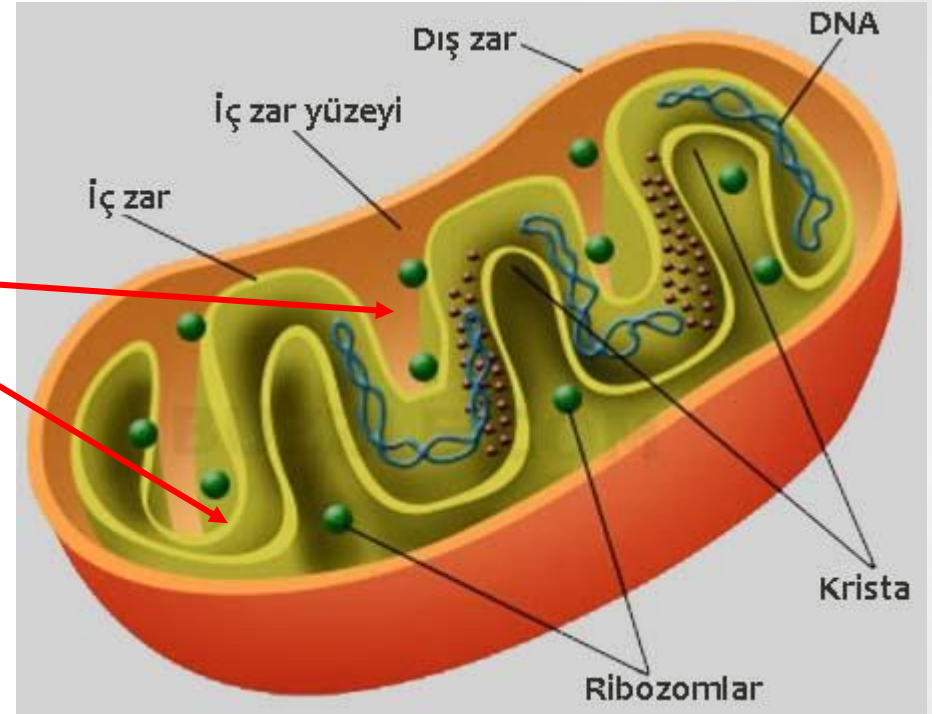
moodustab **kristasid**

Sisekeskkond: **Maatriks**

Oma DNA ja ribosoomid

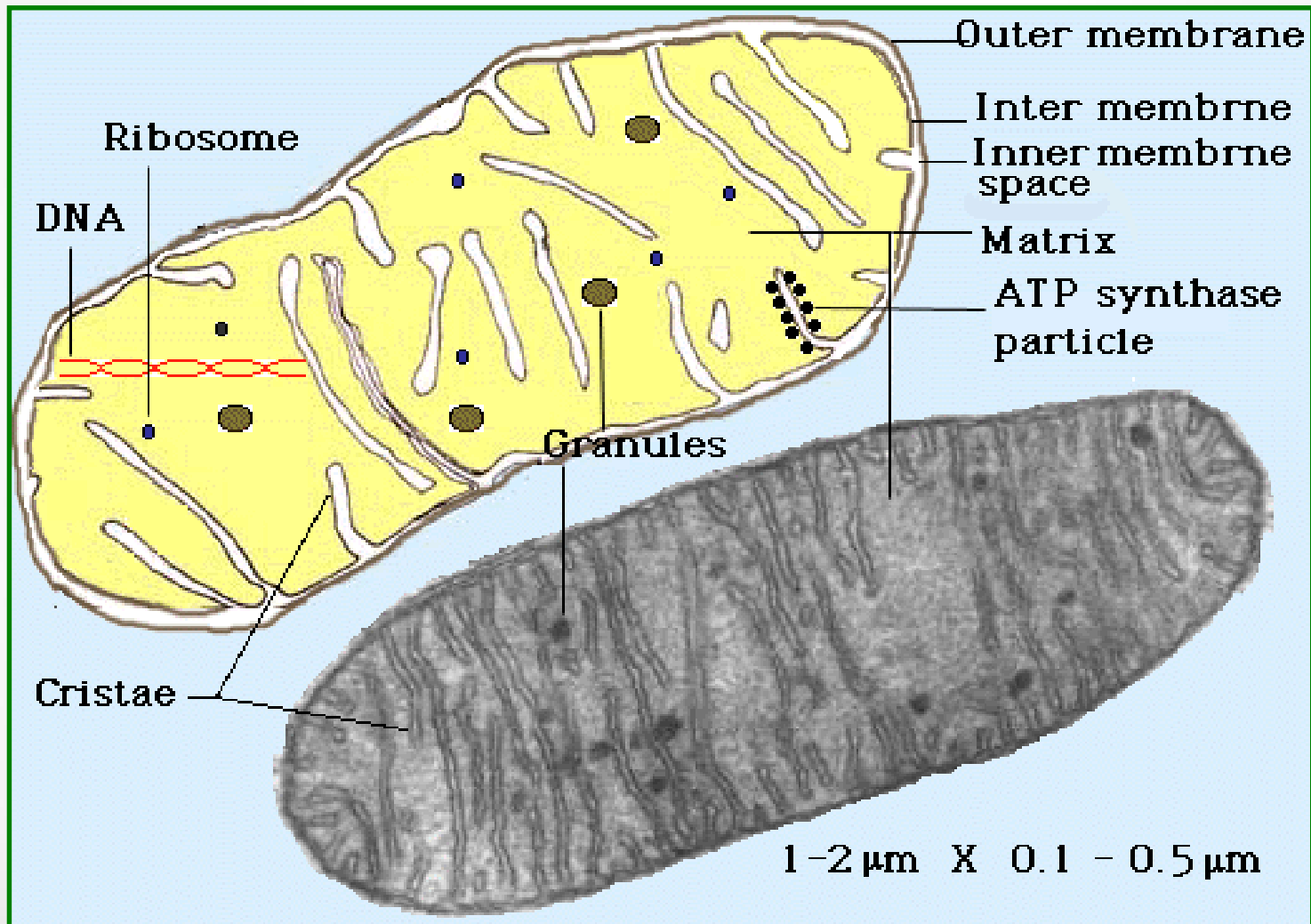
**Ülesanne:** energia

tootmine



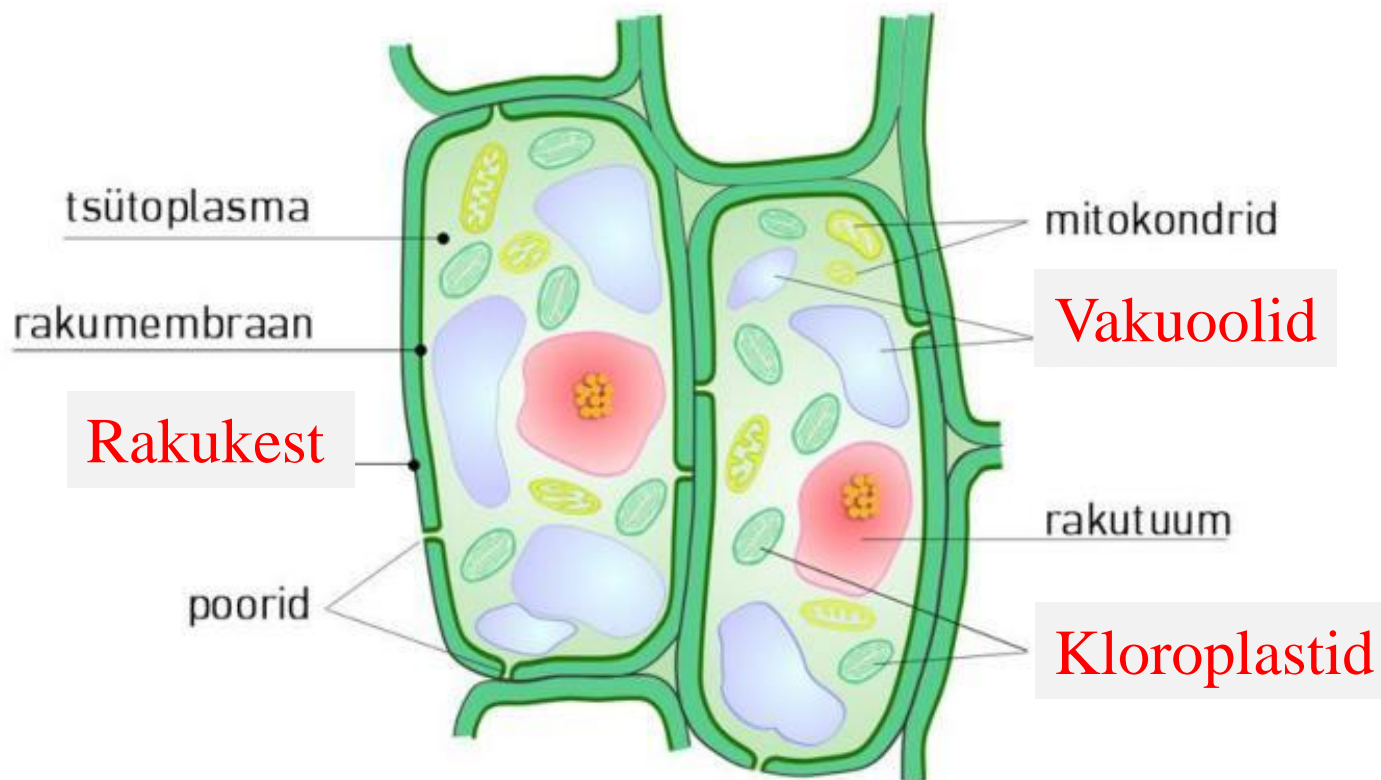
[https://www.youtube.com/watch?v=umKAKer\\_HLI](https://www.youtube.com/watch?v=umKAKer_HLI)

# Mitokondri ehitus



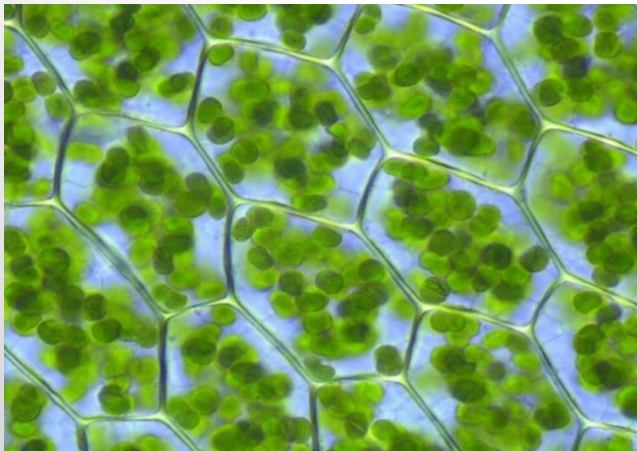
# Taimerakk

Taimeraku ehitus

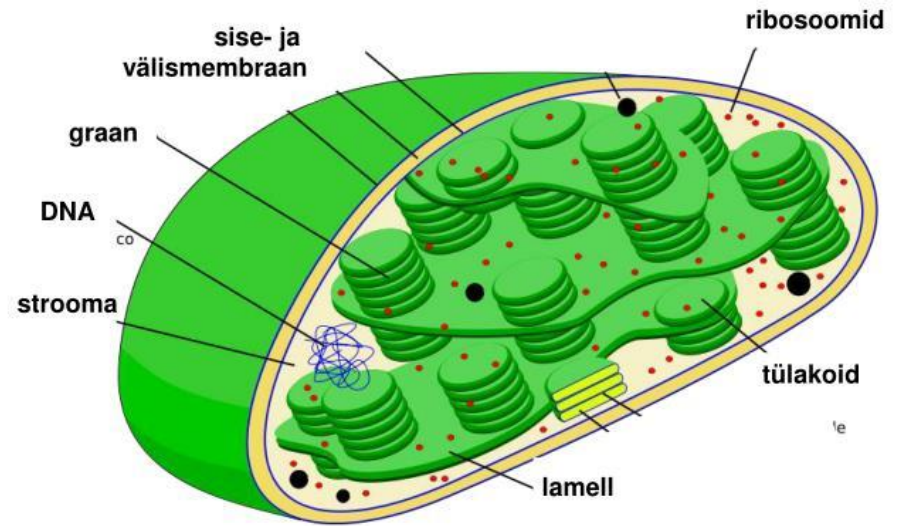


# Kloroplast

2x- membraaniga:  
Sisemine moodustab  
**lamelle** e **tülakoide**  
need omakorda **Graane**  
Sisekeskkond: **Strooma**  
Oma DNA ja ribosoomid  
**Ülesanne:** fotosüntees

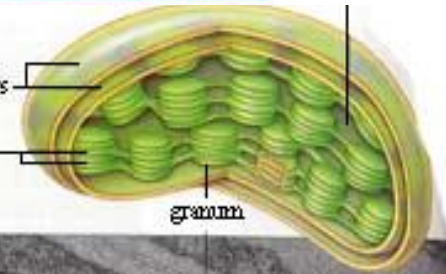


## KLOROPLASTI ehitus



[http://commons.wikimedia.org/wiki/File:Scheme\\_Chloroplast-es.svg](http://commons.wikimedia.org/wiki/File:Scheme_Chloroplast-es.svg)

two outermost  
membrane layers  
inner membrane  
system

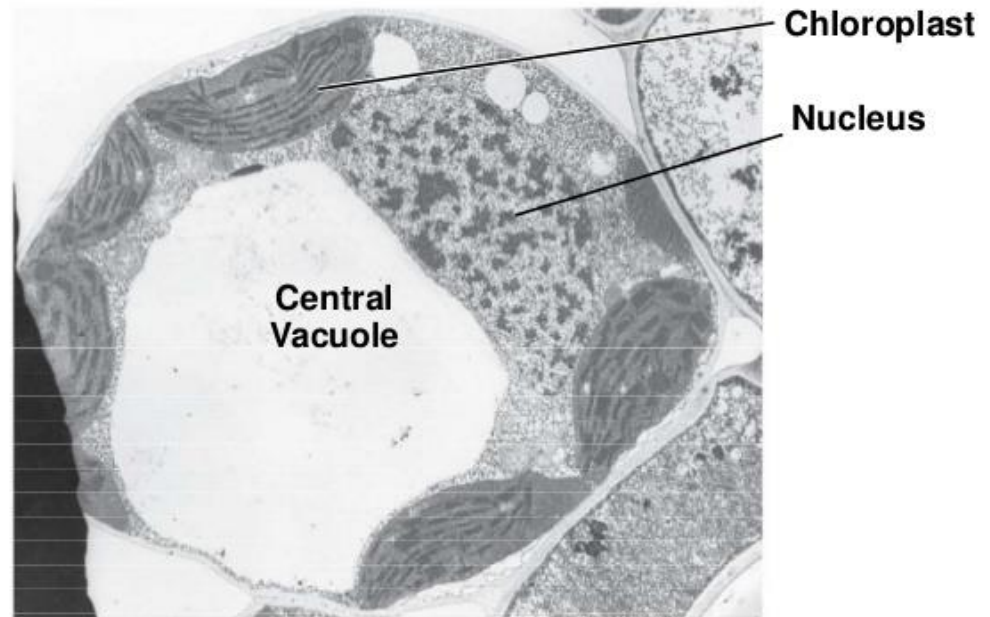


# Vakuool

Membraaniga  
ümbrisetud

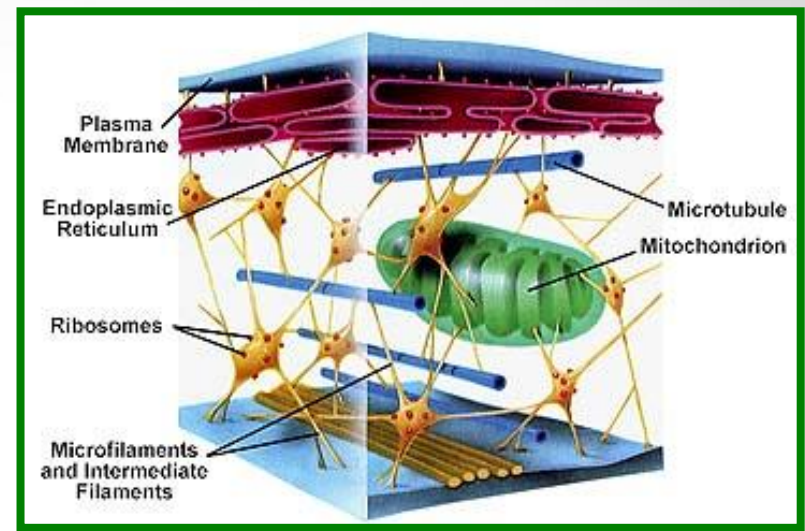
Sisaldab vett ja selles  
lahustunud aineid  
(rakumahl)

Rakurõhu tagamine

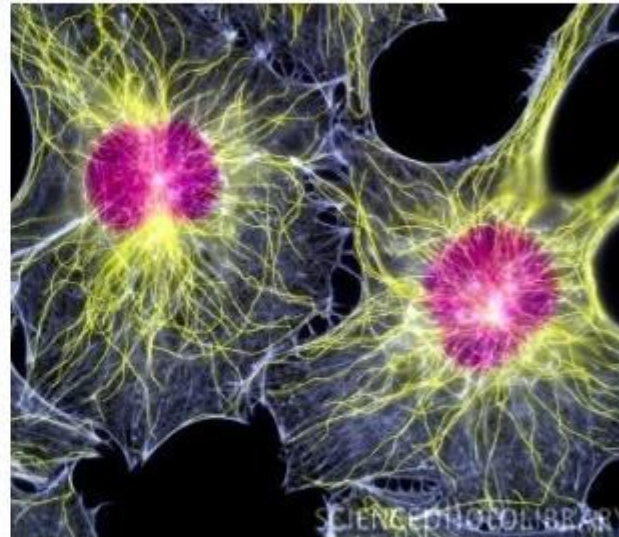
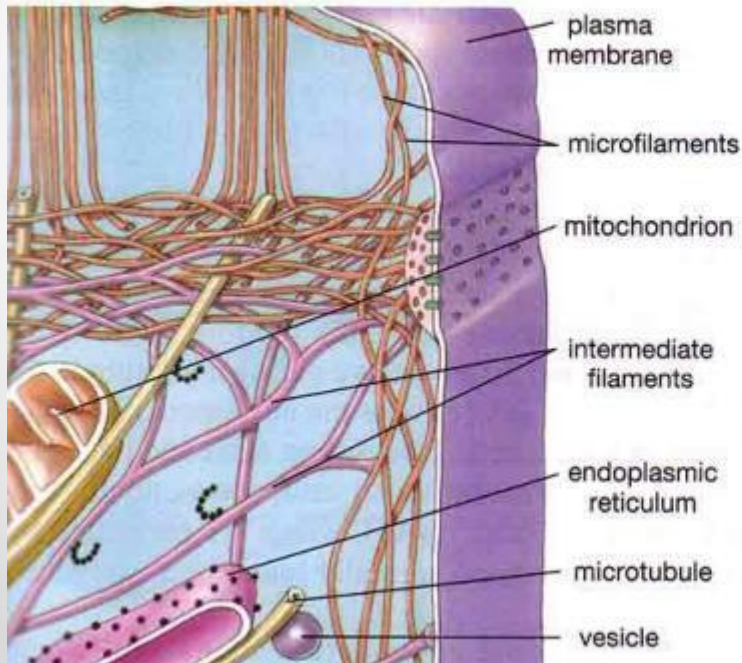


Central vacuole in a plant cell

# Tsütoskelett

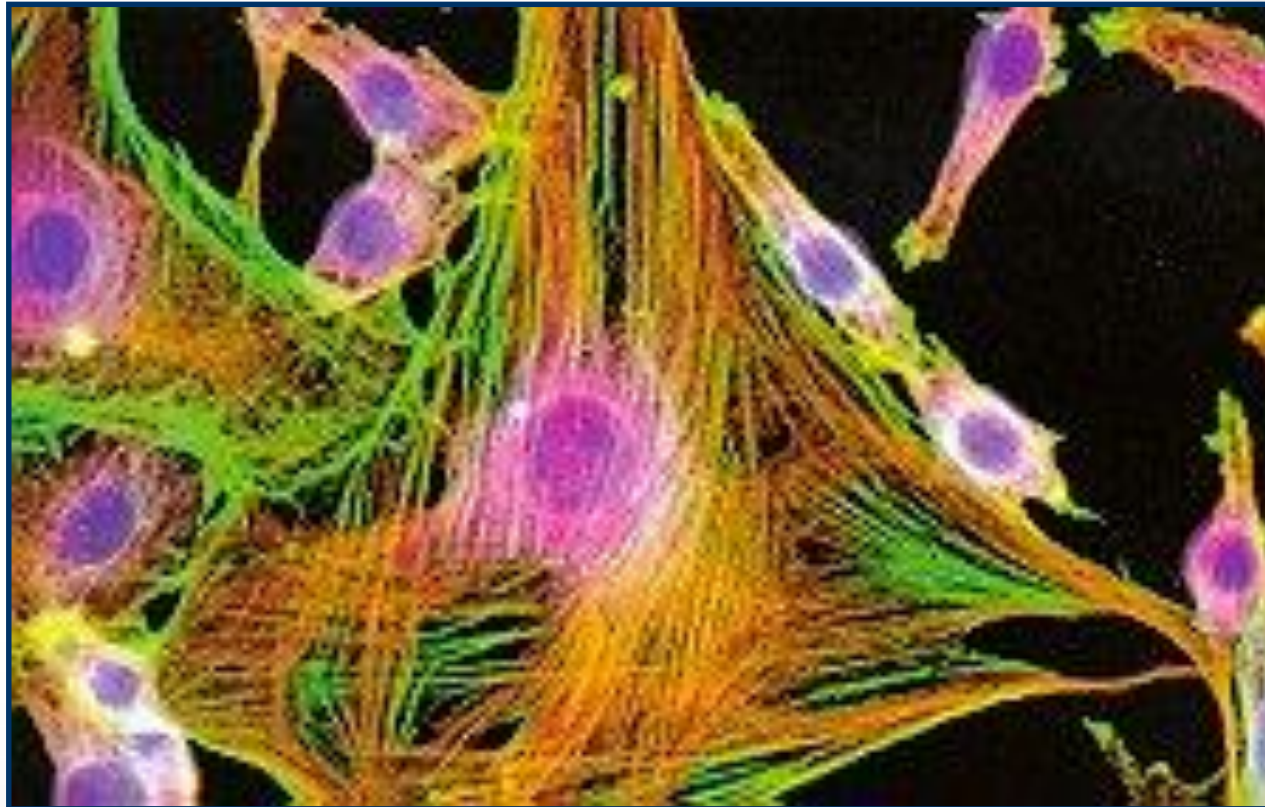


**TSÜTOSKELETT** toestab rakku ,  
liigutab rakku ja tema organelle.

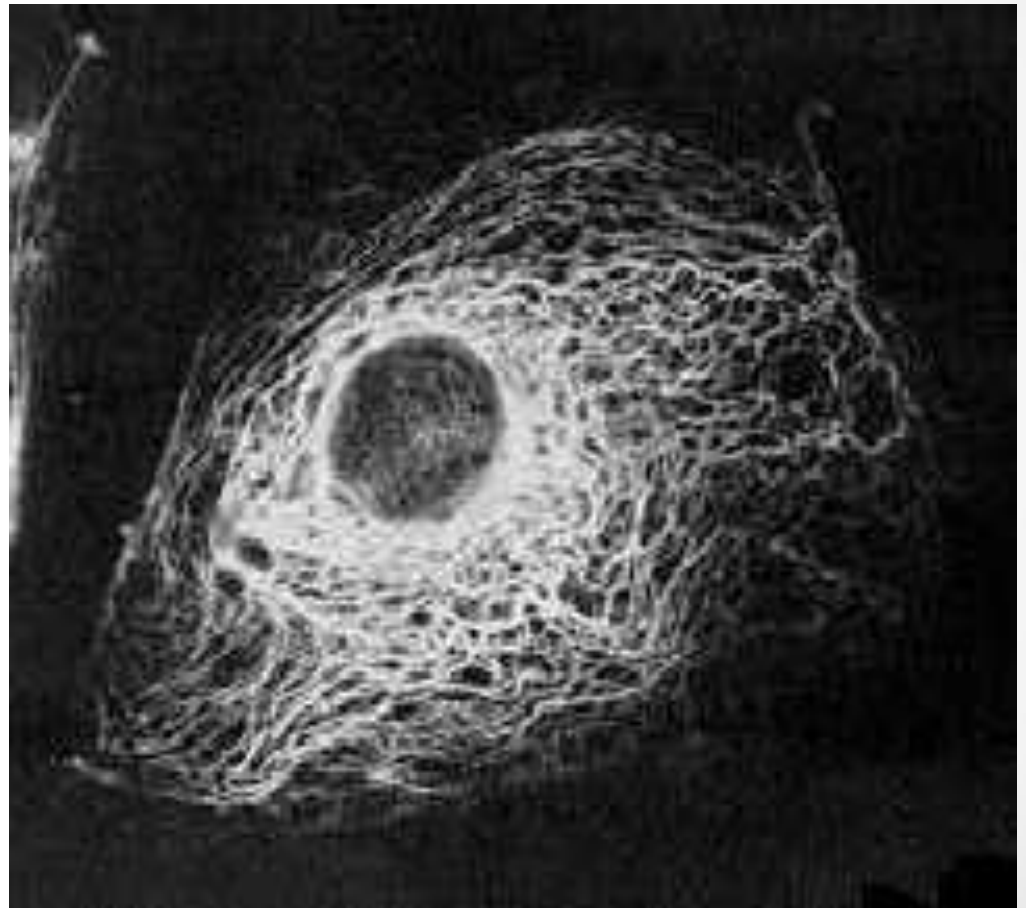
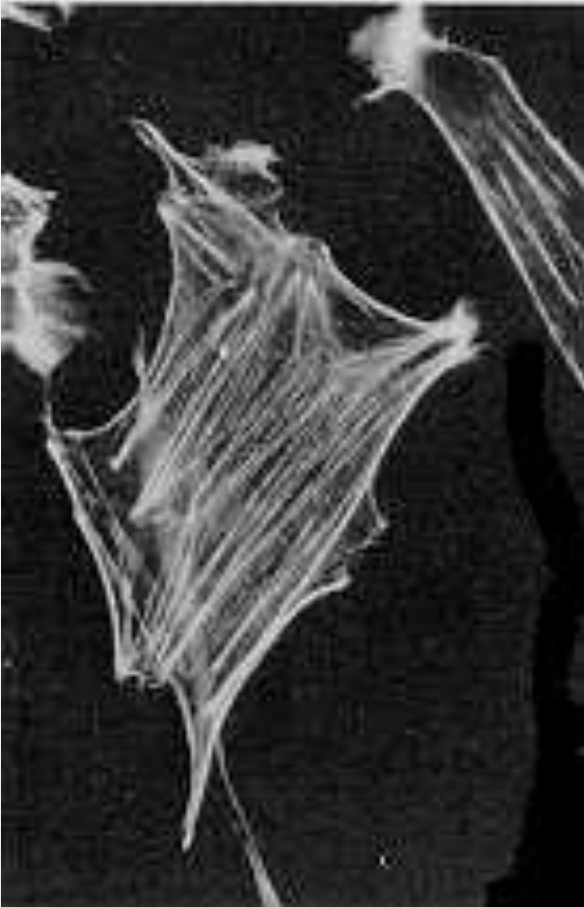


# Tsütoskelett

Koosneb fibrillaarsetest  
valkudest, membraan puudub.

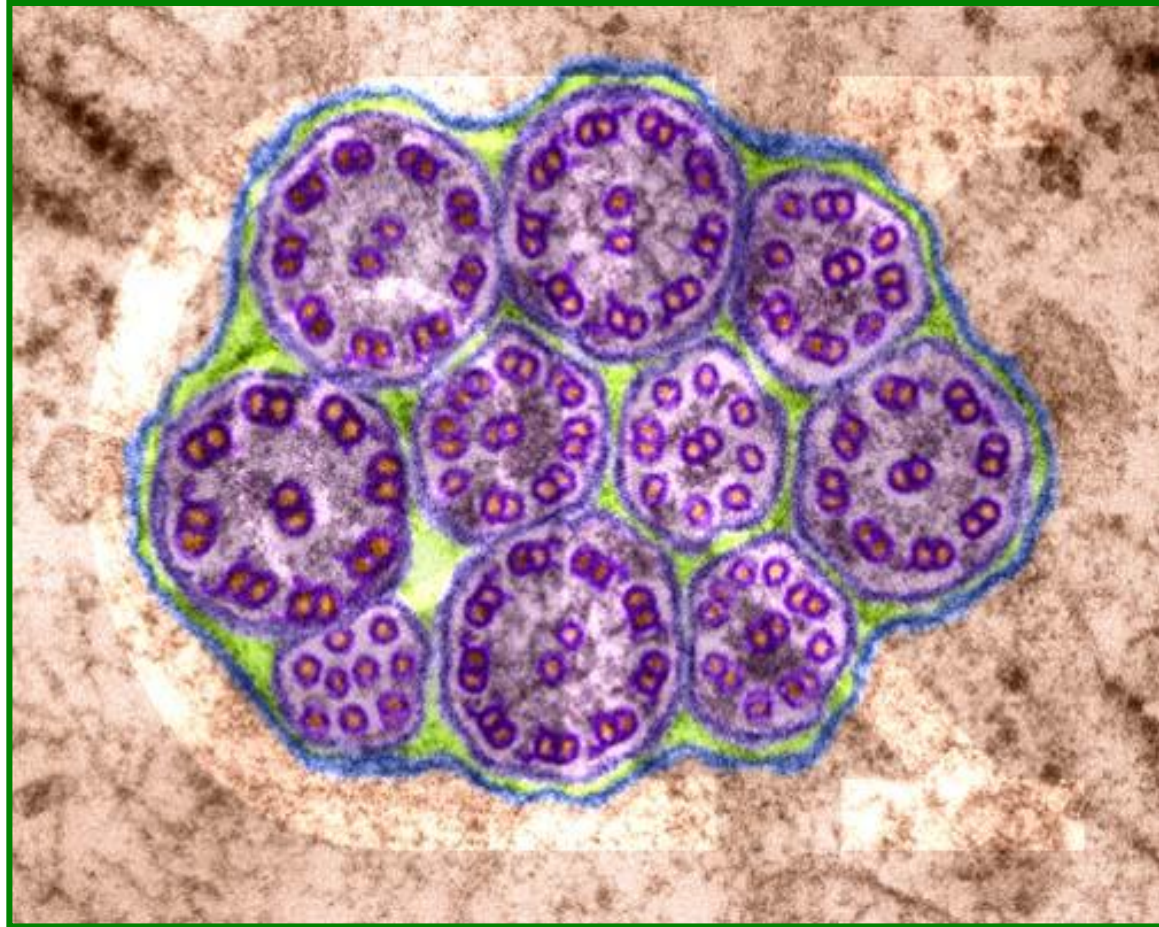
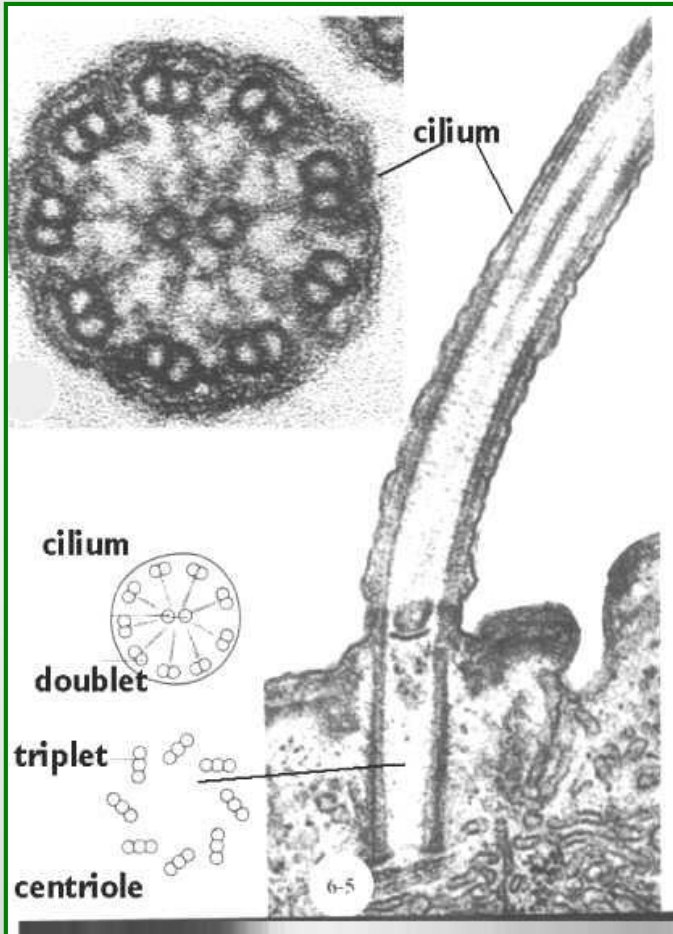


# Mikrofilamentid





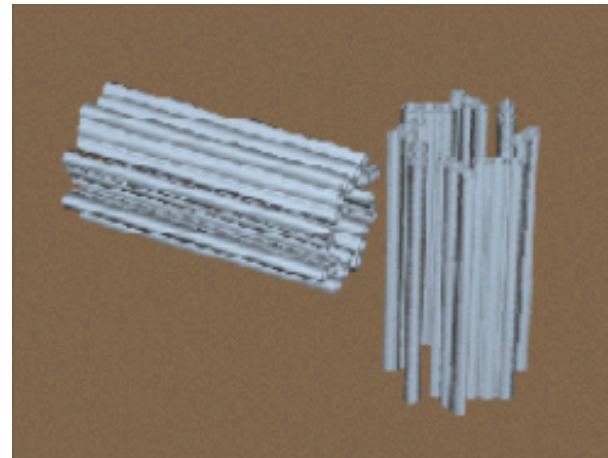
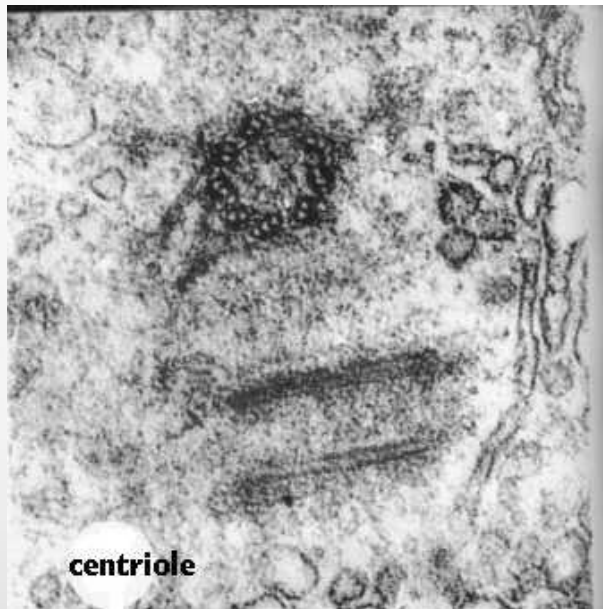
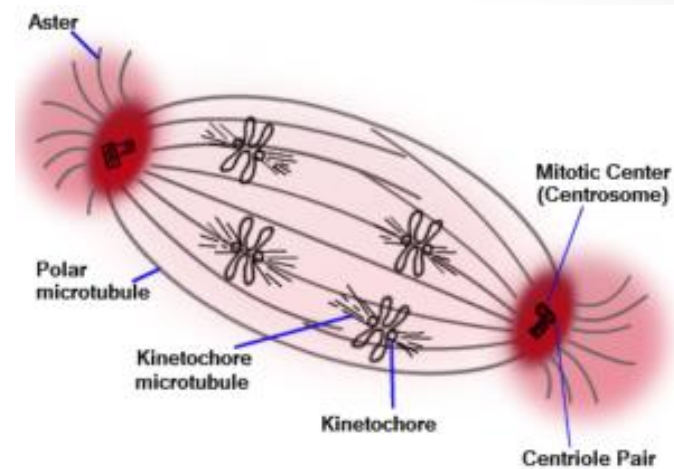
# Viburi ristlõige



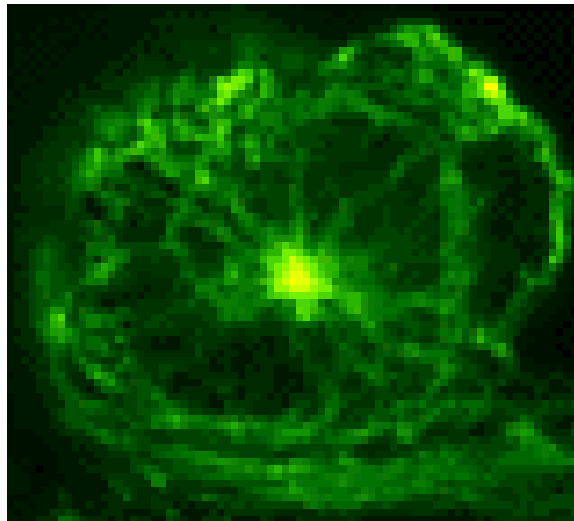
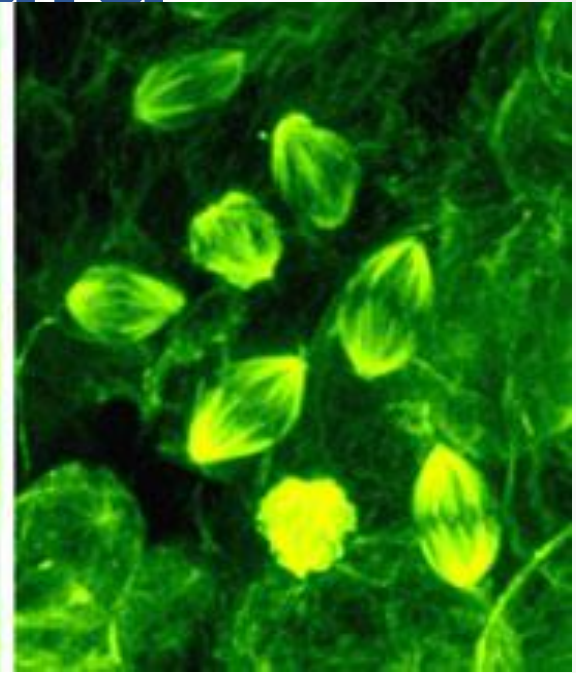
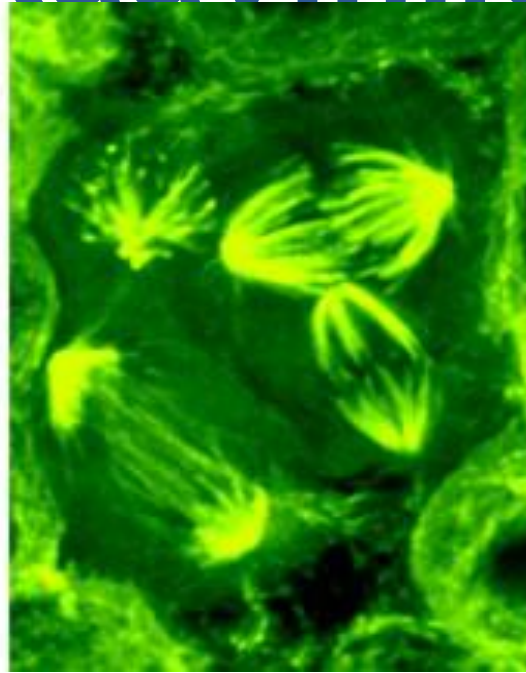
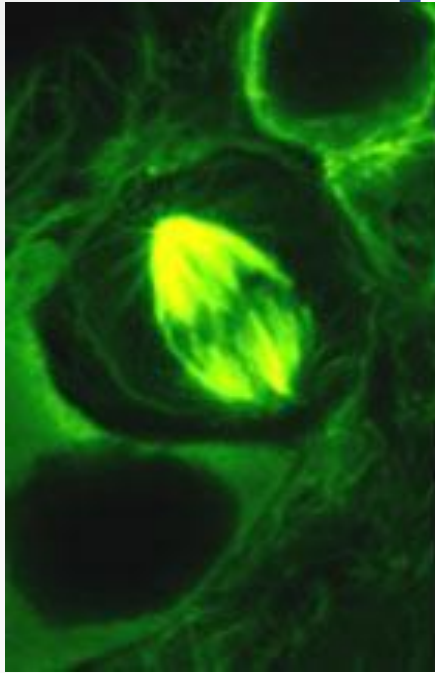
# Tsentrosoom

2 tsentriooli

Ülesanne: kääviniitide moodustamine raku jagunemisel



# Kääviniidid

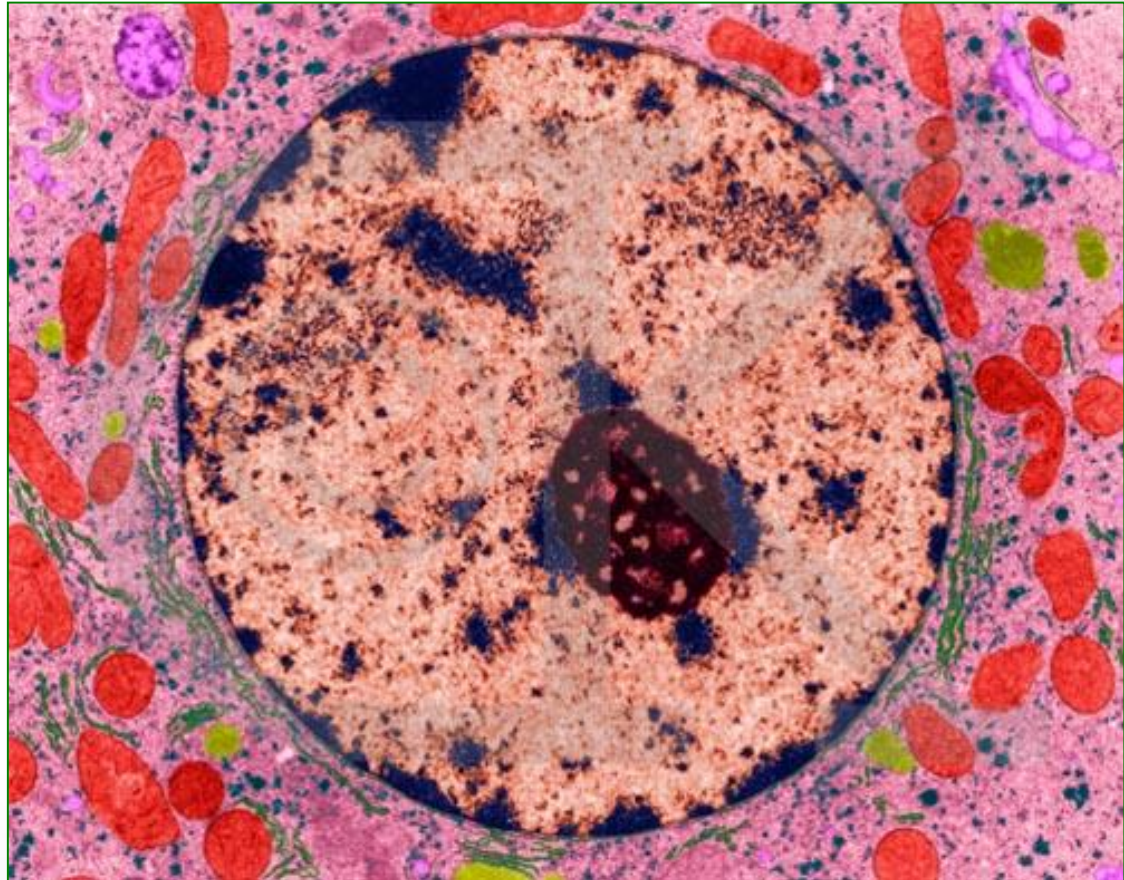


# Raku tuum ja tuumake

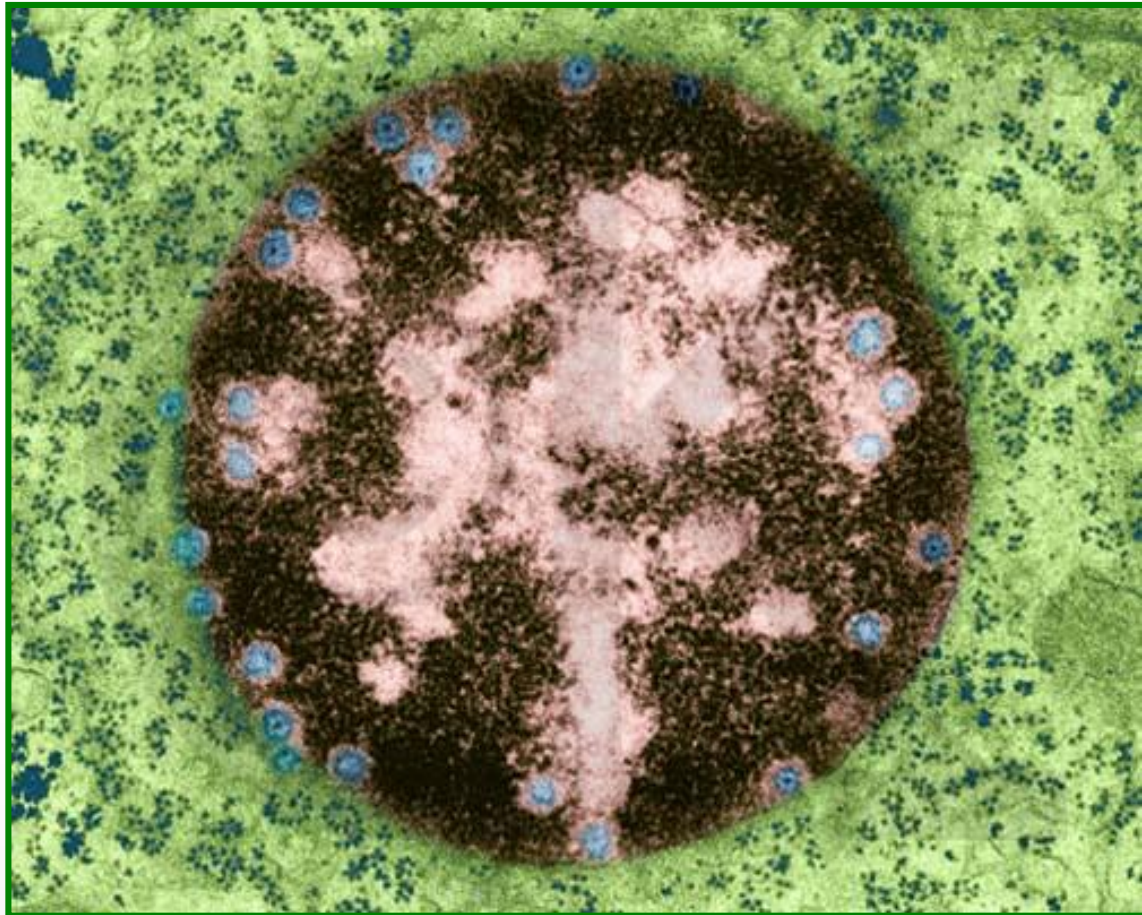
Eristatav interfaasis:

2x membraan pooridega

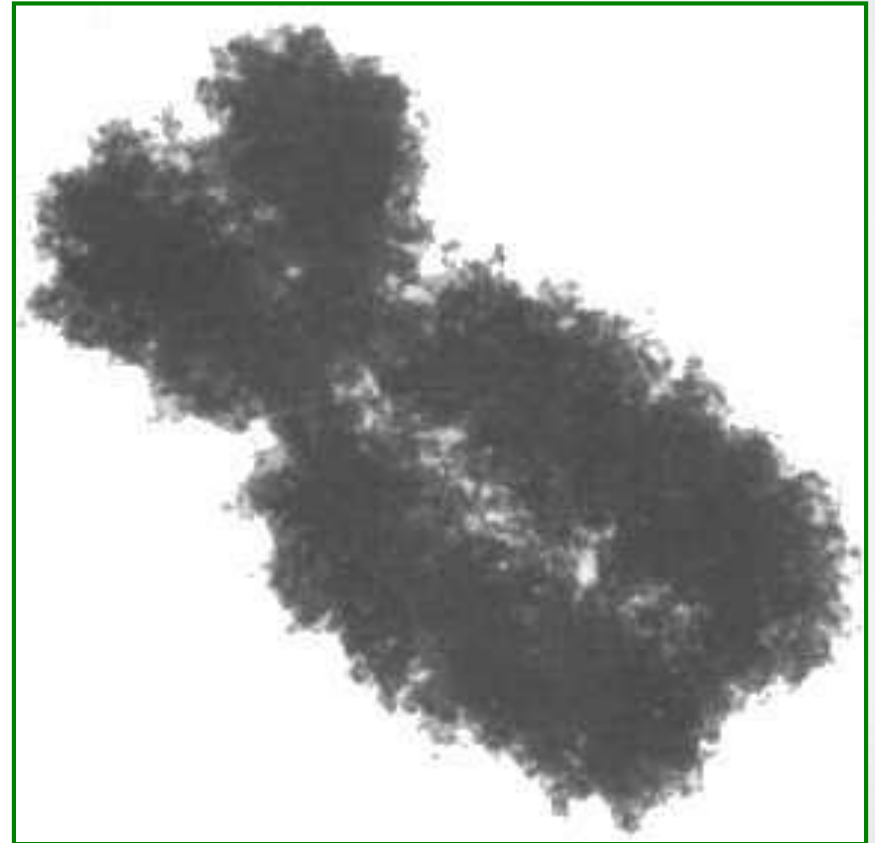
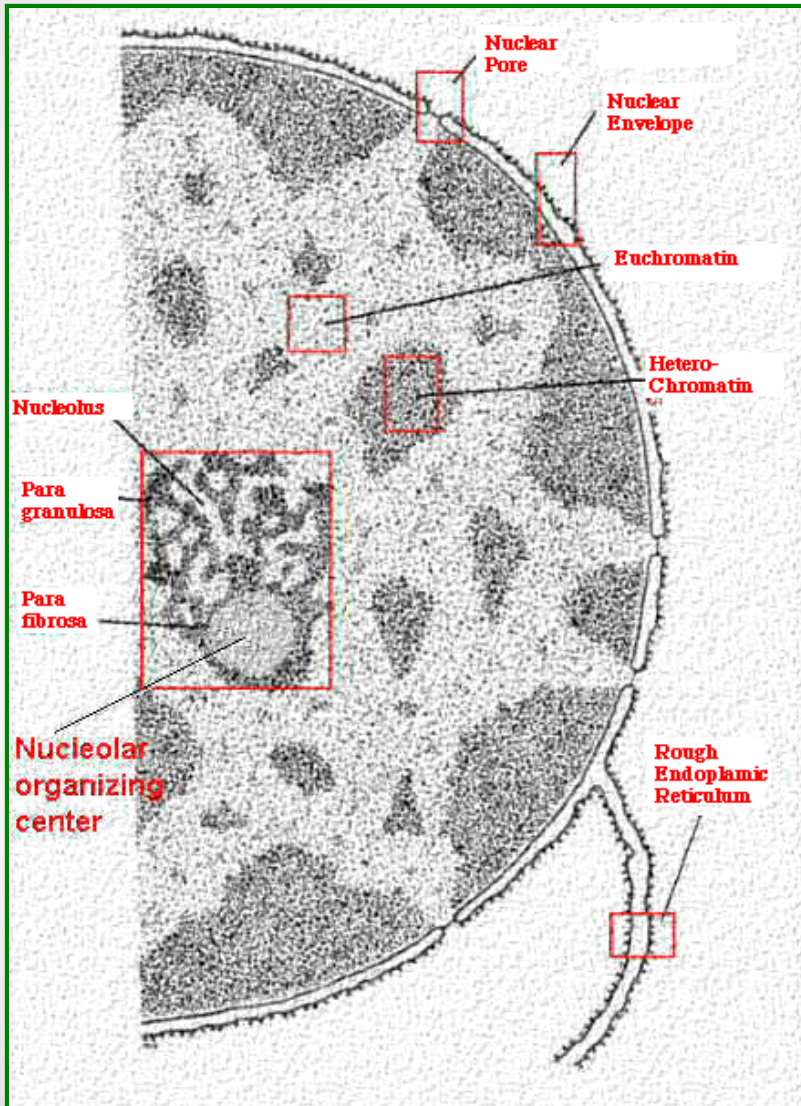
Sisekeskkond: karioplasma,  
Kromatiinaine, tuumake



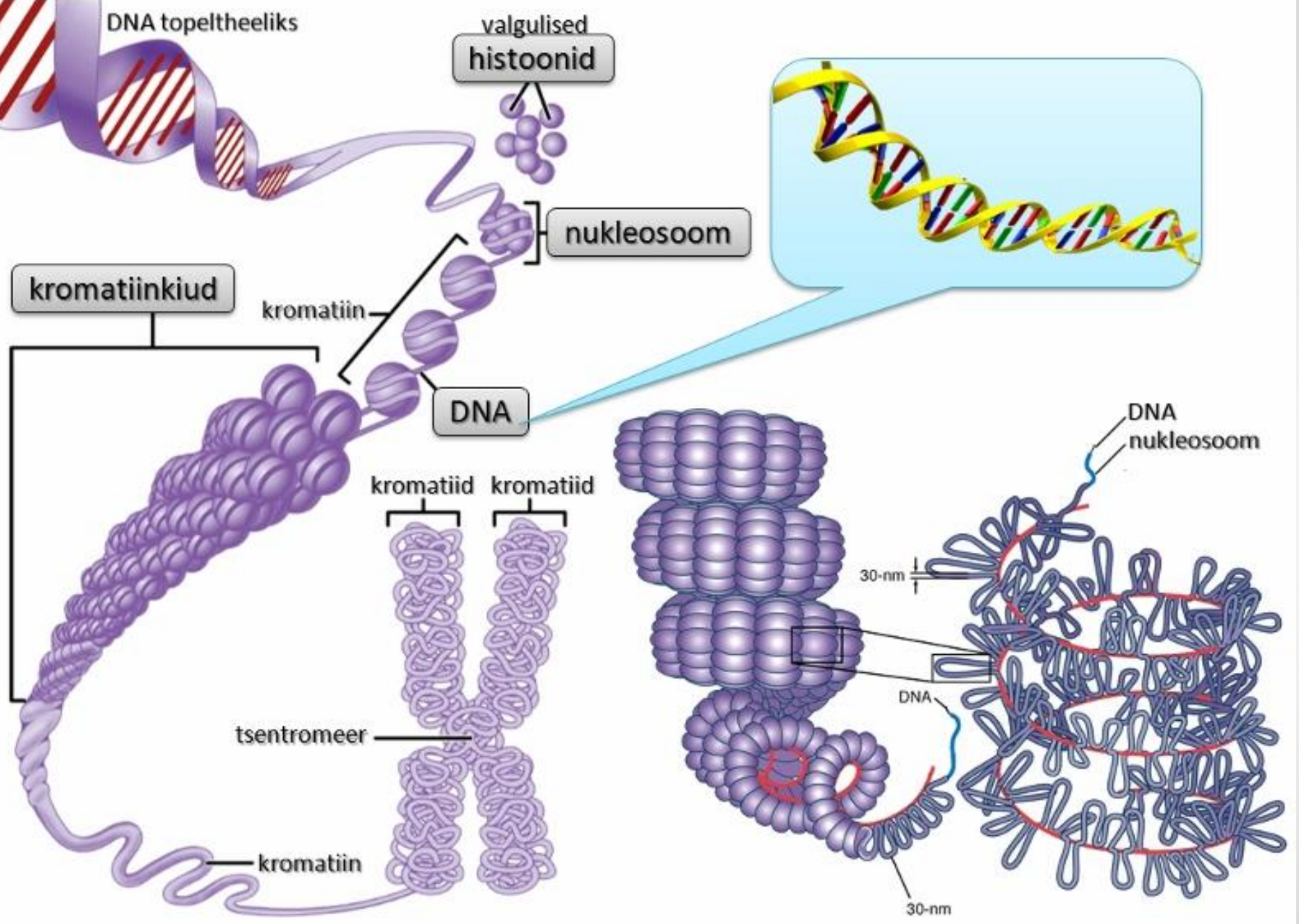
# Tuumaümbrise poorid



# Rakutuum



**kromosoom**



DNA topeltheeliks

valgulised  
histoonid

nukleosoom

kromatiinkiud

kromatiin

DNA

kromatiid

kromatiid

tsentromeer

kromatiin

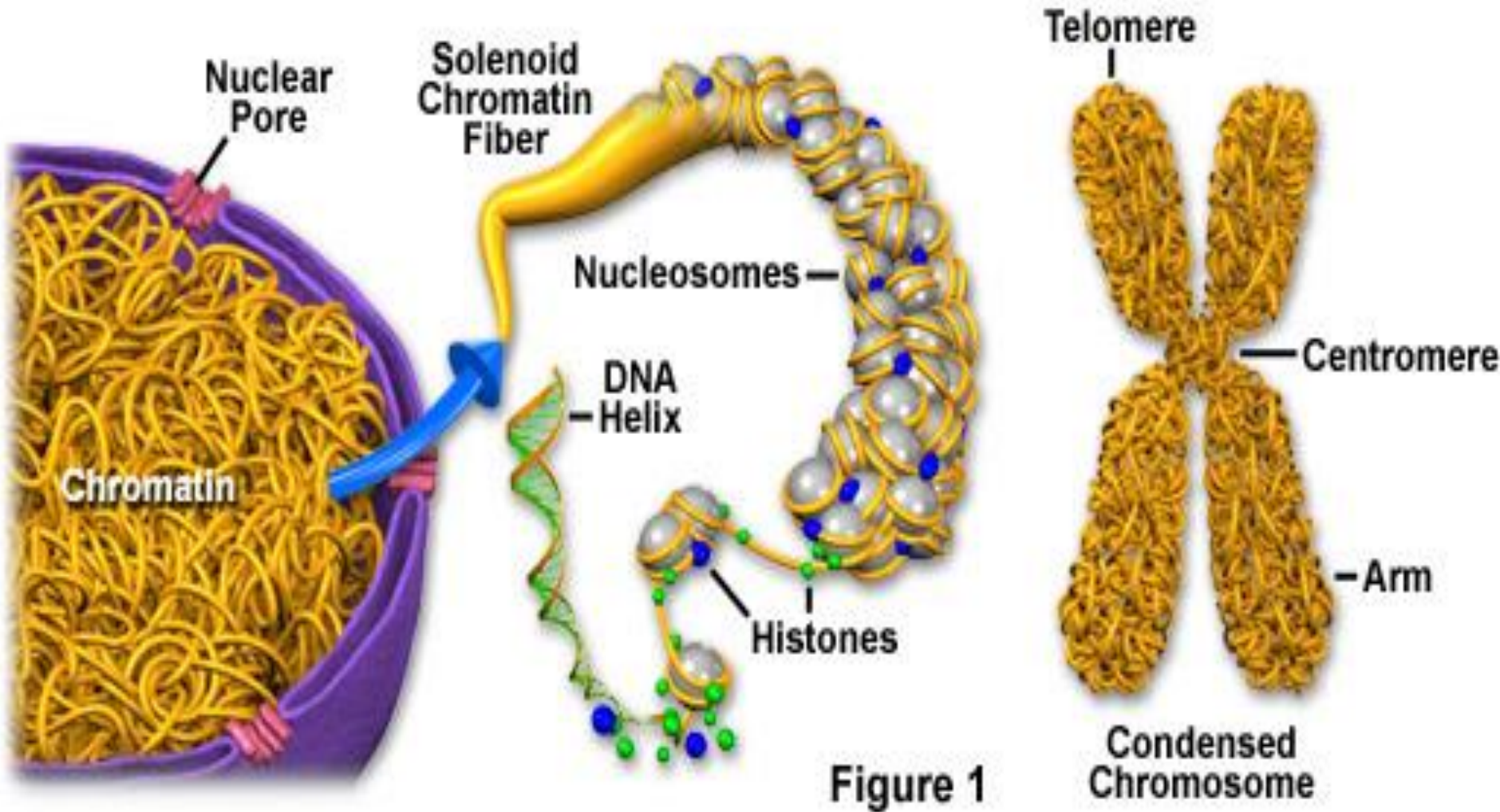
DNA  
nukleosoom

30-nm

DNA

30-nm

# Chromatin and Condensed Chromosome Structure



<https://www.youtube.com/watch?v>

• =OjPcT1uUZiE



# Homoloogilised kromosoomid

...ehk paarilised kromosoomid sisaldavad samu tunnuseid määravaid geene.

Igal liigil on kindel arv kromosoomide.

- Autosoomid
- Sugukromosoomid

Inimesel on sugu tunnuseid määravad kromosoomid X ja Y.

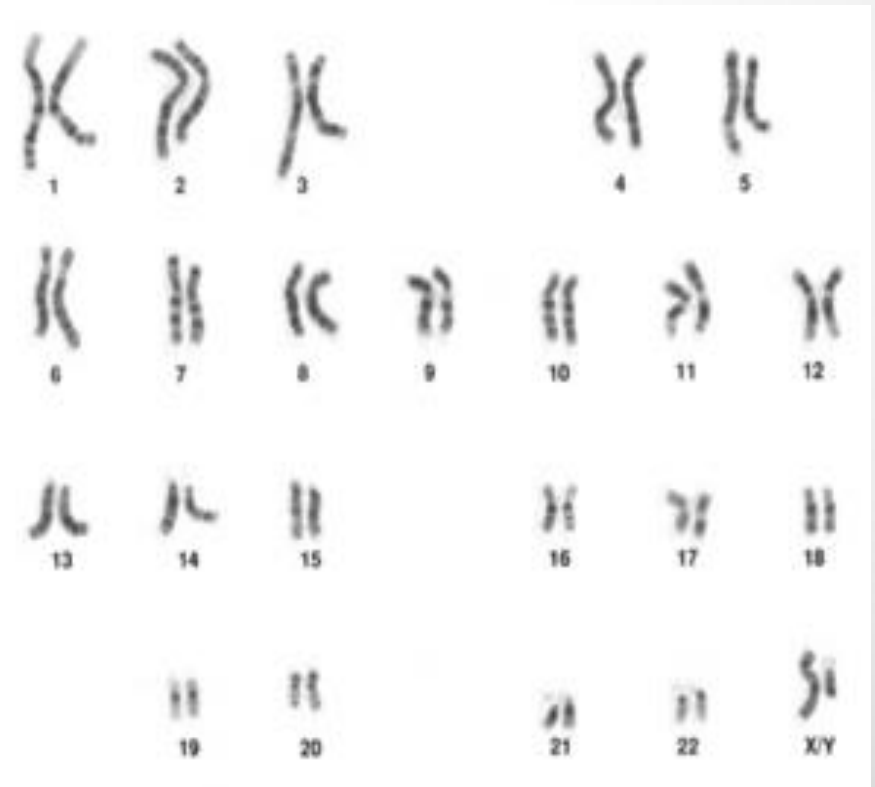
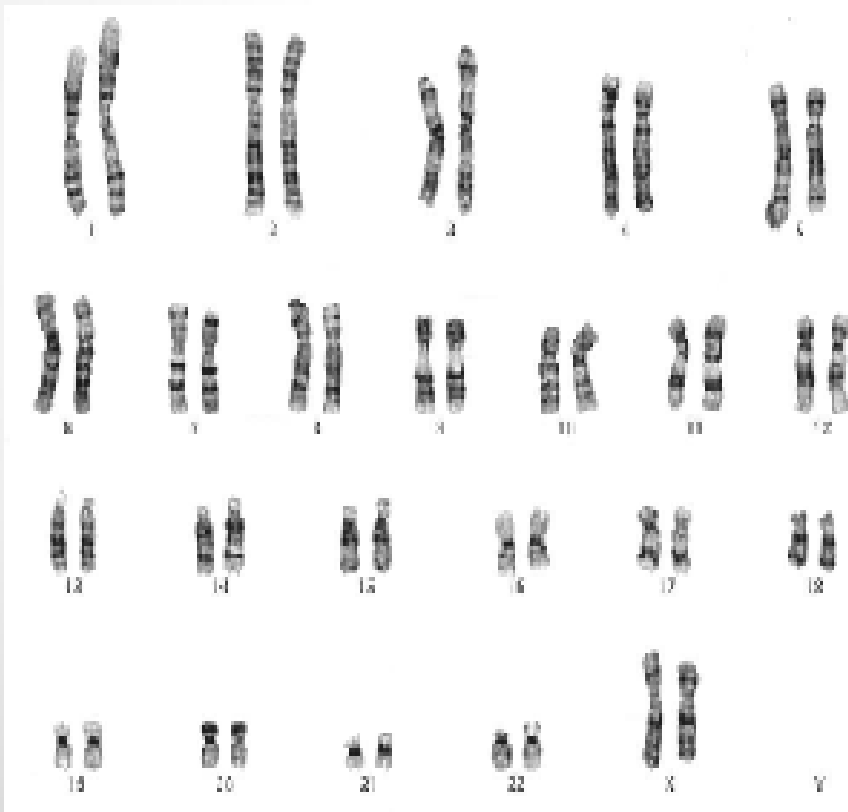
Mehel on ...

Naisel on ...

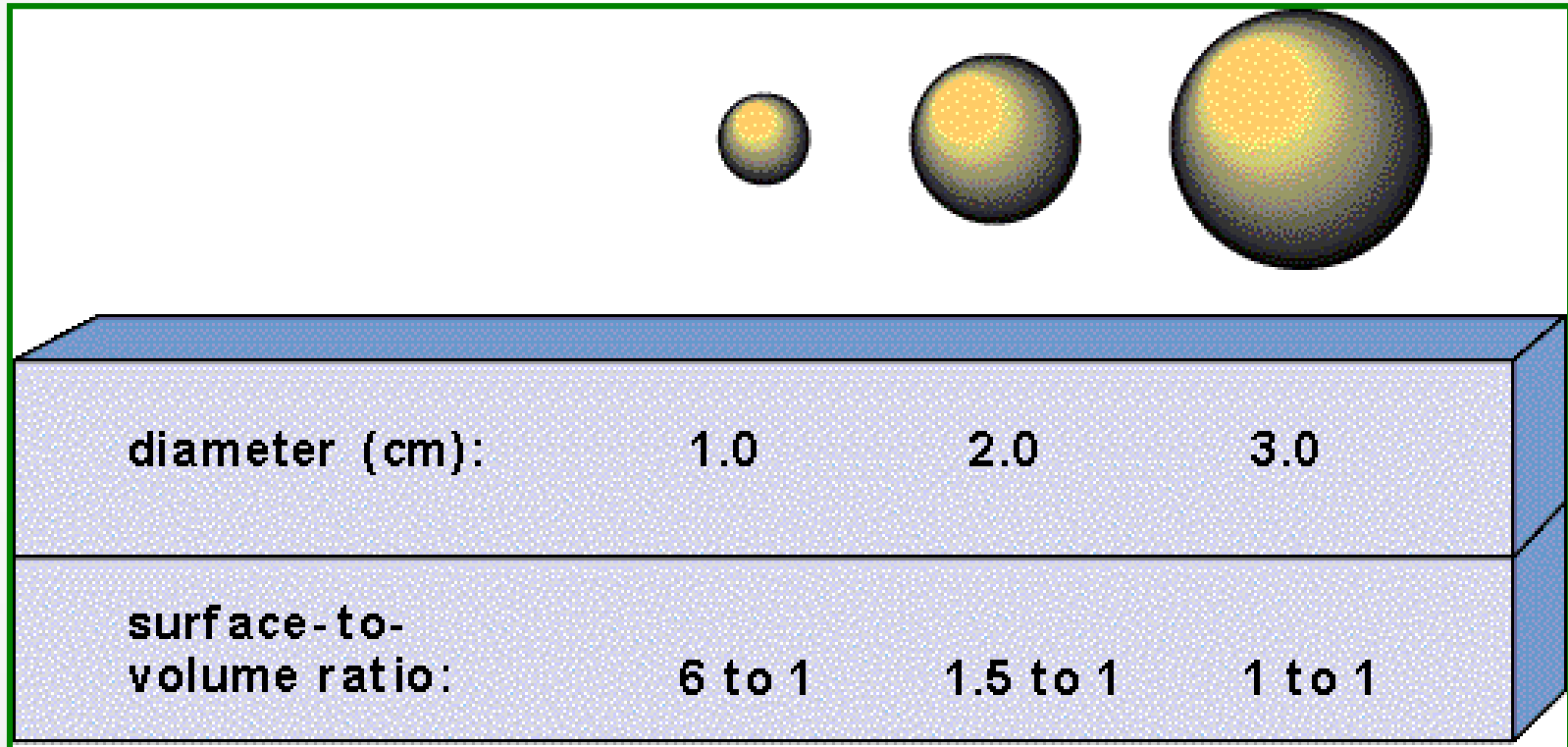
# Kariogramm

Naine

Mees



# Raku suurus



[https://www.youtube.com/watch?v=g4L\\_QO4WKtM](https://www.youtube.com/watch?v=g4L_QO4WKtM)

# Kasutatud kirjandus (Ülle Irdt)

- <https://www.youtube.com/watch?v=OjPcT1uUZiE>
- <https://www.youtube.com/watch?v=PA5nAaulK-Y>
- [https://www.youtube.com/watch?v=g4L\\_QO4WKtM](https://www.youtube.com/watch?v=g4L_QO4WKtM)
- <https://www.youtube.com/watch?v=URUJD5NEXC8&t=240s>
- [https://www.youtube.com/watch?v=umKAKer\\_HLI](https://www.youtube.com/watch?v=umKAKer_HLI)
- <https://www.taskutark.ee/m/wp-content/uploads/sites/2/2014/07/61-800x568.jpg>
- <https://sciencevogel.wikispaces.com/file/view/CellStructure.jpg/488897306/608x467/CellStructure.jpg>
- <https://www.unmedicopertutti.it/membrana.jpg>
- <https://cdn.thinglink.me/api/image/637710996995047424/1240/10/scaletowidth>
- <https://image.slidesharecdn.com/lipiidid-140918012530-phpapp02/95/lipiidid-10-638.jpg?cb=1411003578>
- [https://1.bp.blogspot.com/-GiEAQo8D0cc/WgcSJmbNXOI/AAAAAAAAAELE/x7GdyraJx-l\\_pAFRKJQQiD5wy6jVe\\_jFACLcBGAs/s1600/Struktur%2BBadan%2BGolgi.jpg](https://1.bp.blogspot.com/-GiEAQo8D0cc/WgcSJmbNXOI/AAAAAAAAAELE/x7GdyraJx-l_pAFRKJQQiD5wy6jVe_jFACLcBGAs/s1600/Struktur%2BBadan%2BGolgi.jpg)
- <https://inhabitat.com/wp-content/blogs.dir/1/files/2011/03/photosynthesis1-537x429.jpg>
- <https://image2.slideserve.com/4798428/kloroplasti-ehitus-n.jpg>
- <http://www.biyolojisi.net/uniteler/hucre/images/mitochondria.jpg>
- <https://image2.slideserve.com/5263948/taimeraku-ehitus-n.jpg>
- <https://image.slidesharecdn.com/chapter4-cellissues1compatibilitymode-141214131430-conversion-gate01/95/chapter-4-cell-tissues-1-compatibility-mode-48-638.jpg?cb=1418562920>
- <https://image2.slideserve.com/3814084/ts-toskelett-toestab-rakku-liigutab-rakku-ja-tema-organelle-n.jpg>
- <http://www.biologynoteshelp.com/wp-content/uploads/2016/06/spindle-formation-300x212.png>

**Täna  
tähelepanu eest!**